

CERAMICS AND SHIPWRECKS OF SOUTHEAST ASIA

[CERAMICS CATALOGUE](#)

[SHIPWRECKS](#)

[CHINESE TRADE WARES](#)

[RELEVANT PAPERS](#)

[HOME PAGE](#)



KHMER CERAMICS - DESCRIPTIONS

Khmer Ceramics K-001 to K-039 Catalogue Entries follow below and may be scrolled through, or specific items may be accessed directly with the use of the “FIND” command by entering the corresponding Catalogue Number. Each Catalogue Entry consists of detailed documentation including Catalogue Number, description, size, dating, provenance (origin, place and date of acquisition, cost), and any references to comparable examples. Photos (including the base) are also provided for each in the corresponding **Photos Folder**.

Khmer ceramics acquired prior to July 1999 were originally included under the TH (Thai) series. The five Khmer entries catalogued under the TH series are TH-131 (3 of 3), TH-132, TH-184 (2 & 3 of 3), TH-192 (2 of 2), and TH-214. They are presented on the pages which follow along with the Khmer items acquired subsequently.

(Note: K-040 to K-121 are included in a **Separate Document**)



[HOME PAGE](#)

[CERAMICS CATALOGUE](#)

[SHIPWRECKS](#)

[CHINESE TRADE WARES](#)

[RELEVANT PAPERS](#)

[WEBSITE CONTENTS](#)

[INTRODUCTION & BACKGROUND](#)

[CONTACT & OTHER INFORMATION](#)

[GO TO TOP](#)

TH-131

Khmer brown glazed globular shaped jarlets (3) with flared rim, narrow mouth, and short constricted neck encircled by incised decorative lines. Jarlet No. 1 has shallow vertical gouges extending from the neck to a constricted band above the unglazed light brown colored convex base. It is covered in a variegated glaze, predominately dark brown, but with rust-colored splotches. Jarlet No. 2 is similarly decorated with vertical lines of “dashes”, has a flat unglazed buff-colored base, and is covered in dark brown glaze, lighter toned along the “dashes”. Jarlet No. 3 is undecorated on the body, which is covered in a dark brown slightly mottled glaze ending unevenly above the light buff-colored base with slightly raised perimeter (the glaze also ends unevenly on Jarlets No. 1 and No. 2).

H: 2 11/16 in. (6.8 cm.) - No. 1; and 2 7/16 in. (6.2 cm.) - No. 2;

H: 2 11/16 in. (6.8 cm.) - No. 3.

Khmer: 13th century.

Provenance: acquired in Thailand (March 1998 - \$109).

Compare with the jarlets illustrated in Praya Nakon Prah Ram, “*Tai Pottery*”, *Thai Pottery and Ceramics: Collected Articles from the Journal of the Siam Society 1922 - 1980*, Plate LIC; D. Richards, *South-East Asian Ceramics: Thai, Vietnamese, and Khmer*, No. 145 - right; D. F. Franche, *Southeast Asian Ceramics*, No. 8; W. Willets, *Ceramic Art of Southeast Asia*, No. 6; and Oriental Ceramic Society of Hong Kong, *South-East Asian and Chinese Trade Pottery - Exhibition Catalogue*, No. 239.

TH-132

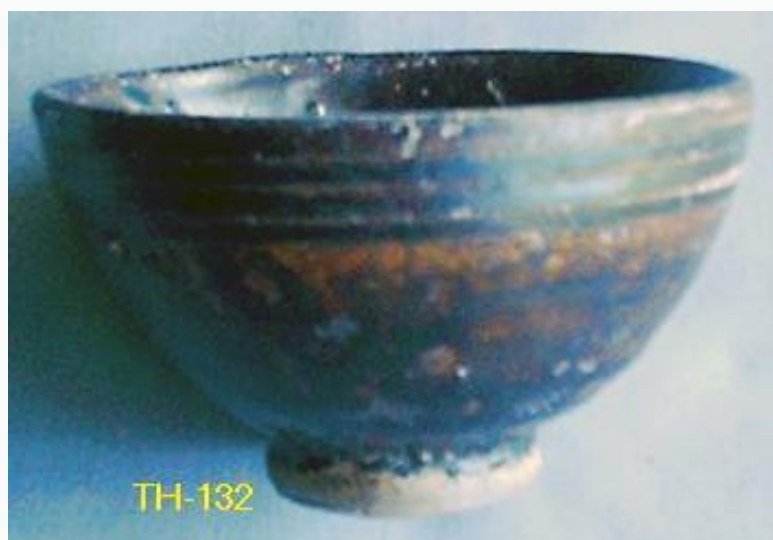
Khmer brown glazed bowl with rather steep sides and upright mouthrim decorated around the exterior with a band of incised lines; the interior plain. The dark brown mottled glaze ends just at the narrow constricted band above the flat, solidly potted unglazed base with deeply etched concentric striations; the biscuit grayish-brown with rust colored splotches.

D: 3 7/8 in. (9.8 cm.).

Khmer: 13th century.

Provenance: acquired in Thailand (March 1998 - \$31).

Compare with the bowls illustrated in W. Willets, *Ceramic Art of Southeast Asia*, No. 10; and Oriental Ceramic Society of Hong Kong, *South-East Asian and Chinese Trade Pottery - Exhibition Catalogue*, No. 242.



TH-184

Sisatchanalai and Khmer brown glazed covers (3) with lotus bud knob and steep sides. Cover No. 1 - Sisatchanalai is coated with a reddish brown glaze and is surrounded by a wide band of lightly molded ridges. Cover No. 2 - Khmer has deep vertical gouges extending from the flattened base of the handle down the sides to the flattened rim. The central lotus bud knob of cover No. 3 - Khmer is encircled by two molded ridges with radiating, deeply incised petal-like gouges - all glazed in light brown - extending to the lightly molded twin ridge surrounding the edge of its top. The unglazed underside of the covers has compact body material ranging in color from dark brown to beige with random darker specks.

D: 1 3/4 in. (4.3 cm.) - cover No. 1;

D: 1 7/8 in. (4.8 cm.) - cover No. 2;

D: 2 3/16 in. (5.6 cm.) - cover No. 3.

Sisatchanalai: 15th century - cover No. 1.

Khmer: 13th century - cover No. 2 and cover No. 3.

Provenance: Ban Payang kiln site excavations - acquired in Sisatchanalai (cover No. 1); Khmer - acquired in Thailand (cover No. 2 and cover No. 3) - (April 1999 - \$9).

TH-192

Khmer brown glazed globular shaped jarlets (2). Jarlet No. 1 with a flange around the cupped narrow mouth, the short constricted neck encircled by incised decorative lines and a narrow band with closely spaced vertical incising - all glazed in light greenish white. Very shallow vertical incising extends from the neck, the body covered in a dark brown glaze. A constricted band, surmounted by a molded ridge, above the unglazed dark brown colored flat base without footrim. Jarlet No. 2 has an elongated neck with flared mouthrim and very narrow mouth; high on the shoulders a narrow band with tightly spaced vertical incising. Decorated with lightly incised vertical lines on the slightly ovoid shaped body, which is covered in a light brown mottled glaze ending unevenly above the splayed flat base with semi-circular cord-cut markings and dense brown body.

H: 2 13/16 in. (7.2 cm.) - No. 1;

H: 2 3/4 in. (7.0 cm.) - No. 2.

Khmer: 13th century.

Provenance: acquired in Thailand (April 1999 - \$49).

Compare jarlet No. 1 with the jarlet illustrated in *Oriental Ceramic Society of Hong Kong, South-East Asian and Chinese Trade Pottery - Exhibition Catalogue*, No. 240; and Hiromu Honda and Noriki Shimazu, *The Beauty of Fired Clay - Ceramics from Burma, Cambodia, Laos, and Thailand*, No. 30 (larger version of jarlet No. 1).

TH-214

Khmer bottle with narrow neck and globular body carved with five large and two much smaller triangular shaped upright leaf forms separated by carved vertical lines. Three molded tiers at the base of the narrow flaring neck, which is surmounted by seven molded ridges diminishing in size on up to the mouthrim. Olive green crackled glaze (now substantially deteriorated) covers the bottle including the nearly flat base, encircled by a lightly incised line in lieu of a footrim. The vessel has a base mark in the form of an off-center incised line transversing one edge of the base.

H: 4 3/4 in. (12.1 cm.).

Khmer: 10th to 12th century.

Provenance: acquired in Phnom Penh

(June 1999 – received as gift from Stanley Kassela).

Compare with the Khmer bottles illustrated in R. Brown, *The Ceramics of South-East Asia*, Plate 20, No. 68; D. Richards, *South-East Asian Ceramics: Thai, Vietnamese, and Khmer*, No. 144; and Hiromu Honda and Noriki Shimazu, *The Beauty of Fired Clay*, No. 18.



K-001

Khmer miniature jarlet glazed brown, the spherical body accented with eight vertical gouge lines extending from the lower body to a rather wide band of incised lines high on the shoulder. Neck is short, and the thickened mouthrim everted. The glaze ends above the carved foot, with no rim; unglazed base is slightly concave with compact, light buff-colored biscuit.

H: 1 7/8 in. (4.7 cm.).

Khmer: 13th century.

Provenance: acquired in Saigon (May 2000 - \$12).

Compare with the jarlets illustrated in Oriental Ceramic Society of Hong Kong, *South-East Asian and Chinese Trade Pottery - Exhibition Catalogue*, No. 239; Praya Nakon Prah Ram, "Tai Pottery", *Thai Pottery and Ceramics: Collected Articles from the Journal of the Siam Society 1922 - 1980*, Plate LIC; D. Richards, *South-East Asian Ceramics: Thai, Vietnamese, and Khmer*, Plate 145 - right; D. F. Frasche, *Southeast Asian Ceramics*, No. 8; and W. Willets, *Ceramic Art of Southeast Asia*, No. 6. Refer also to the Khmer jarlets at TH-131: No. 2 of 3 and No. 3 of 3.



K-002

Khmer gourd shaped bottle with finely crackled dark brown glaze. The bulbous lower section decorated with vertical lines incised in pairs ending well above the base. Separating the lower section from the undecorated upper portion a narrow band of tightly spaced and deeply etched vertical incisions. Below the upright neck an incised decorative band. Evenly applied glaze ends irregularly at the carved foot with no rim. Narrow unglazed base is flat with compact biscuit varying in color from light gray to beige to very light brown.

H: 3 11/16 in. (9.4 cm.).

Khmer: 12th to 13th century.

Provenance: acquired in Thailand (February 2001 - \$68).

Compare with the jarlets illustrated in Hiroshi Fujiwara, *Khmer Ceramics from the Kamratan Collection*, Plate 67; and Hiromu Honda and Noriki Shimazu, *The Beauty of Fired Clay - Ceramics from Burma, Cambodia, Laos, and Thailand*, No. 34 (more squat shaped jarlet without a foot). Refer also to TH-192 (2 of 2) for a Khmer jarlet with a very similar narrow band of deeply etched vertical incisions.



K-003

Khmer bottle with narrow neck and flattened globular body carved with eleven triple outlined pendant lotus leaf forms. A prominent molded ridge at the base of the upward sweeping shoulder. The vertical neck surmounted by four molded ridges diminishing in size on up to the rim with very narrow recessed mouth. The carved foot, without rim, encircled by a sharply articulated molded ridge. Light green crackled glaze, substantially deteriorated over large portions of the bottle, but rather thickly accumulated at the molded ridges on the body, covers the bottle. The glaze extends to the slightly recessed flat base encircled by a wide incised groove and centered with an incised base mark in the form of two parallel lines bisected by a diagonal line.

H: 3 11/16 in. (9.3 cm.).

Khmer: 10th to 12th century.

Provenance: acquired in Thailand (February 2001 - \$23).

Compare with the Khmer bottles illustrated in R. Brown, *The Ceramics of South-East Asia*, Plate 20, No. 68; D. Richards, *South-East Asian Ceramics: Thai, Vietnamese, and Khmer*, Plate 144; and Hiromu Honda and Noriki Shimazu, *The Beauty of Fired Clay: Ceramics from Burma, Cambodia, Laos and Thailand*, No. 18. Refer also to the similarly rendered Khmer bottle at TH-214.

K-004

Fragment of an elephant head from a jar or limepot covered with an evenly applied dark brown glaze. The elephant's eyes, ears, tusks, and trunk modeled. Around its neck an incised collar-like band with similar bands girthing the head. The unglazed underside with very light beige colored body compact in texture.

L: 3 1/2 in. (9.0 cm.).

Khmer: 13th century.

Provenance: acquired in Phnom Penh (March 2001 - \$6).

Compare with the spherical jar illustrated in the Oriental Ceramic Society of Hong Kong, *South-East Asian and Chinese Trade Pottery - Exhibition Catalogue*, No. 241; and the limepot illustrated in D. Richards, *South-East Asian Ceramics: Thai, Vietnamese, and Khmer*, Plate 137 – right.



K-005

Khmer jarlet with broad angular body tapering sharply to a high pedestal foot; the flat base with thickened edge. The join mark where the attached foot is affixed to the body clearly visible. The shoulders of the jarlet curve in sharply to the constricted neck. Wide mouth with upright mouthrim surrounded by a sharp edged, flaring flange. The color of the compact, smooth body is clearly visible due to the eroded glaze and ranges from light beige to light gray.

H: 2 5/8 in. (6.6 cm.);

D: 3 in. (7.5 cm.).

Khmer: 12th to 13th century.

Provenance: entered Thailand at the Aranya Prathet - Poipet, Cambodia border crossing - acquired in Thailand (February 2002 - \$12).



K-006

Khmer covers (4) covered with dark brown glaze, except for cover No. 3, and with lotus bud handle, except for cover No. 2. A small rounded knob handle surrounded by a molded disk border with serrated edge surmounts cover No. 2. On cover No. 1 the lotus bud handle is surrounded by three lightly molded ridges, with an upward projecting ridge encircling the rounded edge. Cover No. 3 is stupa shaped with a very light green crackled glaze covering the three lightly molded double lined bands encircling the rather steep sides. The central lotus bud knob of cover No. 4 is encircled by three molded ridges, the outermost with serrated edge. This heavily potted specimen has a piecrust like indented edge surrounding the upper section. Below is a three stepped lower section, the middle band with radiating incising around the edge. The unglazed underside of covers No. 1, No. 2, and No. 4 has rather compact dark russet colored body. Cover No. 3 is glazed in the recessed interior portion of the bottom, with the unglazed edge light buff colored, smooth and compact.

D: 3 13/16 in. (9.7 cm.) – cover No. 1;

D: 3 11/16 in. (9.4 cm.) – cover No. 2;

D: 3 7/16 in. (8.8 cm.) – cover No. 3;

D: 3 1/16 in. (7.8 cm.) – cover No. 4.

Khmer: 11th to 13th century.

Provenance: entered Thailand at the Aranya Prathet - Poipet,
Cambodia border crossing - acquired in Thailand
(February 2002 - \$14).

(Continued)

K-006 (Continued)

Cover No. 1 of 4 may be compared to the cover on the jar illustrated in Hiromu Honda and Noriki Shimazu, *The Beauty of Fired Clay: Ceramics from Burma, Cambodia, Laos and Thailand*, No. 35. Cover No. 1 of 4 may also be compared with the similarly constructed, though smaller, cover at K-016, No. 1 of 3; and Cover No. 4 of 4 may be compared with the similarly constructed, and also smaller, cover at K-016, No. 3 of 3. Cover No. 3 of 4 may be compared to the two other stupa shaped covers with *brown* glaze at K-017, No. 2 of 3 and No. 3 of 3.



K-007

Khmer limepot in the form of a bird covered with a smooth and lustrous generously applied dark brown glaze. Amply rounded sides accented with six sets of incised vertical lines, along with a similar double "V" accent under the sharp beak. The upright molded beak, with incised mouth, and the applied eyes are just under the short upright mouthrim, which is encircled below by an incised groove. Short tail with serrated edge is affixed .5 centimeters under the incised groove. Glaze ends unevenly just above the solidly constructed flat base with beveled edge; the dark beige colored biscuit dense and compact.

H: 2 5/8 in. (6.7 cm.);

D: 3 11/16 in. (9.4 cm.).

Khmer: 12th to 13th century.

Provenance: entered Thailand at the Aranya Prathet - Poipet, Cambodia border crossing - acquired in Thailand (February 2002 - \$28).

Compare with the limepots in the form of a bird illustrated in R. Brown, *The Ceramics of South-East Asia*, Plate L, No. 3; D. Richards, *South-East Asian Ceramics: Thai, Vietnamese, and Khmer*, No. 134 – center; V. Dofflemyer, *Southeast Asian Ceramics From the Collection of Margot and Hans Ries*, No. 98; and J. C. Shaw, *Introducing Thai Ceramics: also Burmese and Khmer*, page 21 – upper right. Refer also to the other Khmer bird shaped limepots at K-011 and K-012.

K-008

Khmer globular shaped jar with eroded brown glaze, the very short neck encircled by two lightly incised lines, and the slightly flared mouthrim beveled. Very generously rounded body, now devoid of glaze, bisected horizontally at approximately mid-point into two distinct colors of biscuit: light beige in the upper portion and light gray below. Rather narrow beige-colored base tinged russet, markedly countersunk, and with areas lightly marked with concentric striations.

H: 3 1/16 in. (7.8 cm.);

D: 3 5/16 in. (8.5 cm.).

Khmer: 13th century.

Provenance: entered Thailand at the Aranya Prathet - Poipet, Cambodia border crossing - acquired in Thailand (February 2002 - \$9).



K-009

Khmer brown glazed bowl with steep sides and undecorated exterior, the interior with two lightly incised lines under the upright mouthrim. The dark brown lustrous glaze ends unevenly just above the incised single line border encircling the base. Flat, solidly potted unglazed base with deeply etched concentric striations and small errant splotches of light brown glaze; the biscuit light beige colored.

D: 4 3/16 in. (10.6 cm.).

Khmer: 12th to 13th century.

Provenance: entered Thailand at the Aranya Prathet - Poipet, Cambodia border crossing - acquired in Thailand (February 2002 - \$16).

Compare with the bowls illustrated in W. Willets, *Ceramic Art of Southeast Asia*, No. 10; and Oriental Ceramic Society of Hong Kong, *South-East Asian and Chinese Trade Pottery - Exhibition Catalogue*, No. 242. Refer also to TH-132 a similar, slightly smaller, Khmer brown glazed bowl.



K-010

Khmer limepot with eroded brown glaze in the form of a crouching rabbit sculpted in *Botero-esque* fashion with corpulent body and stubby legs. Amply rounded sides are accented with incised detailing representing the legs and flanks. Molded ears are upright and alert with applied eyes and incised mouth. Short stubby tail with incised vertical accents is affixed two centimeters below the 1.5 centimeter wide central perforation. The light beige colored biscuit is dense and compact.

H: 2 9/16 in. (6.5 cm.);

L: 3 3/16 in. (8.1 cm.).

Khmer: 12th to 13th century.

Provenance: entered Thailand at the Aranya Prathet - Poipet, Cambodia border crossing - acquired in Thailand (February 2002 - \$33).

Similar limepots are illustrated in D. F. Frasche, *Southeast Asian Ceramics*, No. 11; R. Brown, *The Ceramics of South-East Asia*, Plate K, No. 4; Hiroshi Fujiwara, *Khmer Ceramics from the Kamratan Collection*, Plate 104; and V. Dofflemyer, *Southeast Asian Ceramics From the Collection of Margot and Hans Ries*, No. 101

K-011

Khmer miniature limepot in the form of a bird covered with a lustrous dark brown mottled glaze. Rounded sides accented with lightly incised horizontal lines representing feathers. Upright molded beak, with incised mouth, and the applied eyes are just under the short thickened mouthrim. The short tail is affixed under the incised groove encircling the mouthrim. Glaze ends unevenly above the solidly constructed, slightly concave base with beveled edge. The dense and compact very dark beige colored biscuit etched with concentric striations and studded with darker impurities.

H: 1 5/16 in. (3.3 cm.);

D: 1 7/8 in. (4.8 cm.).

Khmer: 12th to 13th century.

Provenance: acquired in Thailand (February 2002 - \$6).

Compare with Hiroshi Fujiwara, *Khmer Ceramics from the Kamratan Collection*, Plate 74 – a *green* glazed limepot in the form of a bird, and Plate 77 – a *larger* brown glazed limepot in the form of a bird. Refer also to the other larger Khmer bird shaped limepots at K-007 and K-012.



K-012

Khmer limepot in the form of a bird, the glaze now eroded and exposing the smooth light beige body. Rounded sides are accented with three sets of three incised vertical lines each, along with a similar double “V” accent under the sharp beak. The upright molded beak, with incised mouth, and the applied eyes are under the short upright mouthrim with beveled edge. Two lightly incised lines encircle the mouthrim and further below is a more deeply incised groove. Affixed at this groove is the short tail, which is covered on the upper surface with incised parallel lines. The flat base with rounded edge is encircled by a lightly carved band.

H: 2 in. (5.1 cm.);

D: 3 in. (7.6 cm.).

Khmer: 12th to 13th century.

Provenance: acquired in Thailand (February 2002 - \$24).

Compare with the Khmer bird shaped limepots illustrated in R. Brown, *The Ceramics of South-East Asia*, Plate L, No. 3; D. Richards, *South-East Asian Ceramics: Thai, Vietnamese, and Khmer*, No. 134 – center; V. Dofflemyer, *Southeast Asian Ceramics From the Collection of Margot and Hans Ries*, No. 98; and J. C. Shaw, *Introducing Thai Ceramics: also Burmese and Khmer*, page 21 – upper right. Refer also to the other Khmer bird shaped limepots at K-007 and K-011.

K-013

Khmer squat globular shaped jarlet with rather wide mouth. The short upright mouthrim encircled by a narrow band of incised radiating accents enclosed within incised line borders. Closely spaced vertical gouges extend from high on the shoulders to approximately 1.3 centimeters above the base. Vertical incising marks the slightly projecting rounded edge of the base. The bottom of the base is concave with deeply etched concentric striations. This stoutly potted jarlet with eroded glaze has a light beige dense textured body.

H: 2 1/8 in. (5.4 cm.);

D: 3 3/16 in. (8.1 cm.).

Khmer: 13th century.

Provenance: acquired in Thailand (February 2002 - \$14).



K-014

Khmer covers (2) with cover No. 1 rather highly domed and glazed a murky yellow, cover No. 2 devoid of glaze. The covers have a stalk handle with attached seedpod perched atop a raised border. On cover No. 1 the molded disk raised border is surrounded by a band of incised pendant lotus leaves with a double incised line border below. The molded disk raised border on cover No. 2 encircled with a serrated edge. The unglazed underside of cover No. 2 with smooth and compact body ranging in color from light gray to russet and with adherent kiln debris. Cover No. 1 is partially glazed on the domed portion of the interior bottom, the compact unglazed body very light russet colored.

D: 3 7/16 in. (8.8 cm.) - cover No. 1;

D: 2 3/4 in. (7 cm.) - cover No. 2.

Khmer: 10th to 12th century.

Provenance: acquired in Thailand (February 2002 - \$9).

Compare with the covers illustrated in Hiromu Honda and Noriki Shimazu, *The Beauty of Fired Clay: Ceramics from Burma, Cambodia, Laos and Thailand*, No. 22; and Chhay Visoth et al., Preliminary Results of the Anlong Thom Kiln Excavation on Phnom Kulen in Angkor: A Case Study of ALK01, *Scientific Research on Historic Asia Ceramics*, page 223, Figure 11 (b). The cover at K-106 also shares some commonalities with these two covers (K-014).

(Revised - 21 July 2011 & 20 September 2013)

K-015

Khmer brown glazed bowl, the rounded sides with four lightly incised lines on the exterior encircling the upright mouthrim. At the interior center a raised disk appendage. The dark brown mottled glaze ends unevenly at the single line incised border encircling the base. Unglazed base is flat and solidly potted with deeply etched concentric striations and blackened adhesions of kiln grit; the rough textured biscuit beige colored.

D: 4 1/4 in. (10.9 cm.).

Khmer: 12th to 13th century.

Provenance: acquired in Thailand (February 2002 - \$12).

Refer to J. C. Shaw, *Introducing Thai Ceramics: also Burmese and Khmer*, page 21 – lower right for the illustration of a bowl with a raised disk appendage in the interior center. Refer also to the Khmer brown glazed bowls at K-009 and TH-132.



K-015 (Interior)

K-016

Khmer covers (3), covers No. 1 and No. 3 glazed dark brown and cover No. 2 glazed very light green. Covers No. 1 and No. 2 with lotus bud handle, and cover No. 3 surmounted by a flattened knob with deep radiating incisions. The flattened knob of cover No. 3 is encircled by three molded ridges, with a piecrust like indented border below. Underneath is a two stepped lower section, the lower band with upward flaring edge. On cover No. 1 the lotus bud handle is surrounded by a band with herring bone-like incising enclosed within two molded ridges, with an upward projecting ridge encircling the rounded edge. Cover No. 2 is modeled in the form of a large lotus bud with a very light green crackled glaze, and unglazed truncated sides. The unglazed underside of covers No. 1 and No. 3 with compact beige colored body. Cover No. 3 with the compact biscuit of the unglazed underside ranging in color from light brick-red to very dark russet.

D: 3 15/16 in. (7.5 cm.) - No. 1; D: 1 3/8 in. (3.5 cm.) - No. 2;

D: 2 1/16 in. (5.3 cm.) - No. 3.

Khmer: 12th to 13th century.

Provenance: cover No. 1 acquired in Thailand; cover No. 2 and cover No. 3 acquired in Phnom Penh (February 2002 - \$5).

Cover No. 1 of 3 may be compared with the similarly constructed, though larger, cover at K-006, No. 1 of 4; and cover No. 3 of 3 may be compared with the similarly constructed, and also larger, cover at K-006, No. 4 of 4.

K-017

Khmer covers (3) covered with brown glaze and with knob handle. Cover No. 1 with flattened knob handle surrounded by four molded ridges, with an upward projecting ridge encircling the rounded edge. The underside glazed brown and marked with very prominent concentric striations. Cover No. 2 is stupa shaped with a very dark brown glaze covering the four stepped bands encircling the steep sides surmounted by a lotus bud handle. Cover No. 3 is also stupa shaped with a rough textured mottled brown glaze covering the steep sides. The sides are delimited by double molded line borders at the upper part and at the lower part at the rounded rim. It is surmounted by a conical shaped handle encircled by eight closely spaced molded lines. The unglazed underside of covers No. 2 and No. 3 with compact russet colored body sprinkled with darker impurities.

D: 3 3/4 in. (9.6 cm.) - cover No. 1;

D: 2 15/16 in. (7.5 cm.) - cover No. 2;

D: 3 5/16 in. (8.4 cm.) - cover No. 3.

Khmer: 12th to 13th century.

Provenance: acquired in Phnom Penh (February 2002 - \$20).

A stupa shaped cover similar to cover No. 2 is illustrated in D. Richards, *South-East Asian Ceramics: Thai, Vietnamese, and Khmer*, Plate 142. For a stupa shaped cover with green glaze refer to K-006, No. 3 of 4.

K-018

Khmer cover rather high domed with mottled greenish tinged glaze. A molded bird with surrounding calyx, stalk and seedpod forms the handle atop the cover. Around the upper portion of the sides a band of pendant molded lotus leaves with incised vertical accents. This decorative band is enclosed within an incised four line border above and incised three line border below. Cover is partially glazed on the domed portion of the interior bottom; the compact unglazed body buff colored.

D: 4 1/2 in. (11.5 cm.).

Khmer: 10th to 12th century.

Provenance: acquired in Phnom Penh (February 2002 - \$14).

Refer to the similarly constructed Khmer cover at K-014.



K-019

Ankor Borei earthenware storage vessel. Fine-grained and smooth textured body is light brick-red shading to more subdued hues in areas. Elongated globular shape extends to a fully rounded bottom without footrim. Mouthrim is flared with rounded edge and inward sloping flattened upper surface 1.7 centimeters wide.

H: 3 in. (7.7 cm.).

Khmer: 3rd century B.C. to 2nd century A.D. - (provisional dating).

Provenance: acquired in Phnom Penh (February 2002 - \$4).

Compare with the similarly shaped Ban Chiang vessel at TH-134.



K-020

Khmer brown glazed flattened globular shaped jarlet with wide flared rim, narrow mouth, and high neck. The gently sloping shoulders encircled by a wide band of incised decorative lines. Undecorated body is covered in a degraded dark brown mottled glaze. The unglazed concave base has a slightly raised perimeter and light brown colored biscuit. Hard and resonant body material would appear to be the result of a relatively high firing temperature.

H: 2 in. (5.0 cm.).

Khmer: 13th century.

Provenance: acquired in Phnom Penh (February 2002 - \$4).



K-021

Ankor Borei earthenware implement or receptacle with light gray colored, fine grained and smooth textured body. Elongated thimble shape is covered with diagonal striations, the flared base with rolled edge and hollow interior.

H: 3 in. (7.7 cm.).

Khmer - 3rd century B.C. to 2nd century A.D. - (provisional dating).

Provenance: acquired in Phnom Penh (February 2002 - \$2).



K-022

Khmer jar with nearly straight sides and steep shoulders covered with a light green mottled glaze with a fine network of crackle overall. Three lightly incised lines encircle the mouth of this stoutly potted specimen. The glaze ends unevenly above the base with slightly raised edge and coarse textured dark buff colored body.

H: 3 5/16 in. (8.5 cm.).

Khmer: 11th to 12th century.

Provenance: acquired in Phnom Penh (February 2002 - \$10).

May be compared to the Khmer jarlet illustrated in Hiromu Honda and Noriki Shimazu, *The Beauty of Fired Clay: Ceramics from Burma, Cambodia, Laos and Thailand*, No. 57a – upper right.



K-023

Khmer lenticular shaped oil jarlet covered with light brown mottled glaze. Decorated with a wide band of incised vertical lines around the squat flattened body. Above, low on the shoulders, is a narrower band of chevron shaped incising enclosed within an incised triple line border below and similar double line border above. Another band of chevron incising, similarly enclosed, is repeated just below the mouthrim. The thickened mouthrim has a distinctive upward projecting piecrust like indented edge. Two incised lines encircle the narrow mouth. The attractive light brown mottled glaze ends unevenly above the broad concave base with fine-grained beige colored body.

H: 2 1/2 in. (6.3 cm.);

D: 4 15/16 in. (12.6 cm.).

Khmer: 11th to 13th century.

Provenance: acquired in Phnom Penh (February 2002 - \$80).

Compare with the lenticular shaped jarlets illustrated in Hiroshi Fujiwara, *Khmer Ceramics from the Kamratan Collection*, Plate 50, Plate 52, and Plate 48 (the latter a jarlet with green glaze); and D. F. Franche, *Southeast Asian Ceramics*, No. 8.

It may be noted that the distinctive piecrust-like edge of the mouthrim represents a rather unusual feature. Research has not yet revealed any other similar jarlets.

K-024

Khmer globular shaped jarlet glazed dark brown. The narrow mouth with slightly flared mouthrim encircled by a band of incised dash and dot accents enclosed within incised line borders. Rather closely spaced vertical gouges extend from high on the shoulder to just above the base. The evenly applied glaze, darker toned where accumulated, ends unevenly on and immediately above the base. Slightly recessed flat base is stoutly potted with light beige colored compact body.

H: 2 3/16 in. (5.6 cm.);

D: 2 7/16 in. (6.2 cm.).

Khmer: 13th century.

Provenance: entered Thailand at the Aranya Prathet - Poipet, Cambodia border crossing - acquired in Thailand (February 2003 - \$17).

Compare with the similarly decorated jarlet at K-013 and with the miniature brown glazed jarlet at K-001.



K-025

Khmer brown glazed bowl with steep rounded sides and upright mouthrim with flared, thickened edge. Decorated on the exterior with two crisply incised lines under the mouthrim, and the foot encircled by a narrow band carved in relief. Interior is plain. The dark brown glaze, substantially degraded on the exterior, ends above the foot except for one prominent glaze run extending to the base. Base without footrim is solidly potted, unglazed with grayish-brown biscuit, concave, and etched with concentric striations.

D: 3 11/16 in. (9.4 cm.).

Khmer: 13th century.

Provenance: entered Thailand at the Aranya Prathet - Poipet, Cambodia border crossing - acquired in Thailand (February 2003 - \$17).

Compare with the bowls illustrated in *Oriental Ceramic Society of Hong Kong, South-East Asian and Chinese Trade Pottery - Exhibition Catalogue*, No. 242; and W. Willets, *Ceramic Art of Southeast Asia*, No. 10. Compare also with the brown glazed Khmer bowls at TH-132, K-009, and K-015.

K-026

Khmer jarlet thinly covered in brown glaze with broad angular body tapering sharply to a high pedestal foot. The flattened shoulders of the jarlet curve in sharply to the wide upright mouth, with the rim surrounded by two crisply incised lines. At the juncture of the body and high shoulders a flange with slightly flaring sharp edge and incised lines above and below. A rather deeply incised groove above the solidly potted flared foot. Unglazed base with grayish-brown biscuit is slightly concave and marked with clearly etched concentric striations.

H: 3 1/8 in. (8 cm.);

D: 3 1/2 in. (9 cm.).

Khmer: 12th to 13th century.

Provenance: entered Thailand at the Aranya Prathet - Poipet, Cambodia border crossing - acquired in Thailand (February 2003 - \$39).

Refer to K-005 for a jarlet with commonalities in method of potting.

The unglazed interior of this jarlet contains residual traces of hardened white lime paste indicating former use as an accoutrement in betel chewing.

K-027

Khmer green glazed jarlet with bulbous body and elongated neck with flared mouthrim and very narrow mouth. High on the rather steep shoulders a narrow band of two incised lines. The light green transparent crackled glaze, darker toned where pooling occurs, ends unevenly above the base. Stoutly potted narrow base is concave and unglazed with dense light beige biscuit.

H: 3 1/8 in. (8 cm.).

Khmer: 12th to 13th century.

Provenance: entered Thailand at the Aranya Prathet - Poipet, Cambodia border crossing - acquired in Thailand (February 2003 - \$6).

Compare with the similar shaped Khmer jarlets illustrated in W. Sorsby, *South-East Asian and Early Chinese Export Ceramics*, No. 208 (brown and cream glaze); and Oriental Ceramic Society of Hong Kong, *South-East Asian and Chinese Trade Pottery - Exhibition Catalogue*, No. 240 (brown glaze). Refer also to the similar shaped brown glazed Khmer jarlet at TH-192 (No. 2 of 2).



K-028

Khmer jarlets (3); jarlet No. 1 with broad angular body tapering sharply to a high pedestal foot, the flat base with thickened edge. The shoulders of the jarlet curve in sharply to the rather high flaring neck. Wide mouth with upright mouthrim is surrounded by a sharp edged, flaring flange. Jarlet No. 2 and jarlet No. 3 similarly constructed, but with more gently rounded body, very short constricted neck, and foot without pedestal. Slightly spreading flat base of jarlet No. 2 and jarlet No. 3 is considerably narrower than the base of jarlet No. 1. The color of the compact body of the three jarlets, clearly visible due to the eroded glaze, ranges from light beige to light gray.

H: 2 5/8 in. (6.7 cm.) – No. 1;

H: 2 3/8 in. (6 cm.) – No. 2;

H: 2 5/16 in. (5.8 cm.) – No. 3.

Khmer: 12th to 13th century.

Provenance: acquired in Phnom Penh (February 2003 - \$16).

The three jarlets may be compared to the jarlet at K-005, especially jarlet No. 1, which is very similar.

K-029

Khmer jarlets (2) with squat flattened body, the light brown glaze now deteriorated, especially on jarlet No. 1. The body of the jarlets devoid of decoration, except for an incised line around the rather high, gradually narrowing neck of jarlet No. 1. On jarlet No. 2 a short spreading neck with flared, sharp edged narrow mouthrim. The mouthrim of jarlet No. 1 is beveled to a gently rounded finish; narrow mouth on both jarlets. The glaze ends unevenly well above the base on jarlet No. 1 and just below mid-body on jarlet No. 2. Base of jarlet No. 1 is broad and flat with fine grained light grayish beige-colored body, on jarlet No. 2 a broad concave base with fine grained beige-colored body.

D: 4 1/16 in. (10.4 cm.) – No. 1;

D: 4 in. (10.2 cm.) – No. 2.

Khmer: 12th to 13th century.

Provenance: acquired in Phnom Penh (February 2003 - \$18).

Compare with the jarlets illustrated in Hiroshi Fujiwara, *Khmer Ceramics from the Kamratan Collection*, Plate 53; D. Richards, *South-East Asian Ceramics: Thai, Vietnamese, and Khmer*, Plate 145 – right center and left center; and D. F. Frasche, *Southeast Asian Ceramics*, No. 8. Refer also to the lenticular shaped oil jarlets at K-023, K-030, and K-036.

K-030

Khmer large lenticular shaped oil jarlet decorated with a band of combed wavy lines high on the broad flattened shoulders. Below, low on the shoulders, is a narrow band of short oblique line incising enclosed within incised line borders. Another band of short oblique line incising, similarly enclosed, is repeated just below the mouthrim. Wide edge of the thickened mouthrim is smooth and rounded. The lower body is encircled by two incised lines. Glazed area ends unevenly above the very slightly recessed, broad, flat base with smooth fine-grained light apricot colored body. Brown glaze is substantially eroded clearly revealing the portion of the jarlet originally covered with glaze, and now very light gray colored, and the unglazed base, which is oxidized light apricot.

D: 5 5/8 in. (14.4 cm.).

Khmer: 11th to 13th century.

Provenance: acquired in Phnom Penh (February 2003 - \$18).

Compare with the lenticular shaped jarlets illustrated in V. Dofflemyer, *Southeast Asian Ceramics From the Collection of Margot and Hans Ries*, No. 96; D. Richards, *South-East Asian Ceramics: Thai, Vietnamese, and Khmer*, Plate 146 – right; and W. Willets, *Ceramic Art of Southeast Asia*, No. 4. The other lenticular shaped oil jarlets at K-023 and K-036 may also be referred to.

K-031

Ankor Borei earthenware storage vessels (3). Fine-grained body (more coarse on vessel No. 2) is light brick-red shading to dark gray in areas (especially on vessel No. 1). Elongated globular shape extends to a fully rounded bottom without footrim. Mouthrim with rounded edge is moderately flared on vessel No. 1, markedly flared on vessel No. 2, and flattened on vessel No. 3. Upper surface of the mouthrim slopes inward on vessel No. 1 and vessel No. 2, and is approximately 2.3 centimeters wide and 2.1 centimeters wide respectively. Flattened upper surface of the mouthrim of vessel No. 3 measures approximately .8 centimeters.

H: 2 1/2 in. (6.4 cm.) – No. 1;

H: 2 9/16 in. (6.5 cm.) – No. 2;

H: 2 1/4 in. (5.7 cm.) – No. 3.

Khmer: 3rd century B.C. to 2nd century A.D. - (provisional dating).

Provenance: Takeo Province excavations, Cambodia - acquired in Phnom Penh (February 2003 - \$6).

Compare with the similar Ankor Borei pot at K-019 and the similarly shaped Ban Chiang vessel at TH-134.

K-032

Khmer miniature jarlet covered with very light green glaze. Slightly flattened globular form with gently sloping shoulders curving in smoothly to the flared rim of the wide mouth. Glaze ends in an uneven line just below mid-body, considerably above the base. Slightly concave base is unglazed with the body light brown colored, compact, fine-grained, and etched with concentric striations.

H: 1 7/16 in. (3.6 cm.);

D: 1 13/16 in. (4.6 cm.).

Khmer: 12th to 13th century.

Provenance: acquired in Phnom Penh (February 2003 - \$3).



K-033

Khmer limepot in the form of a bird, the dark brown crackled glaze now substantially eroded and exposing the smooth light gray body. The upward pointing molded beak, with incised mouth, and the applied eyes are immediately under the short upright mouthrim with beveled edge. Two lightly incised lines encircle the mouthrim and further below is a more deeply incised groove. Affixed at this groove is the narrow pointed tail. Glazed area ends unevenly just above the lightly carved band which encircles the base. Flat base with beveled edge is unglazed with the body light brown colored, compact, and etched with concentric striations. The eroded brown glaze clearly reveals the portion of the jarlet originally covered with glaze, and now light gray colored, and the unglazed base, which is oxidized light brown.

H: 2 3/8 in. (6.1 cm.); D: 3 1/8 in. (7.9 cm.).

Khmer: 12th to 13th century.

Provenance: acquired in Phnom Penh (February 2003 - \$20).

Compare with the Khmer bird shaped limepots illustrated in D. Richards, *South-East Asian Ceramics: Thai, Vietnamese, and Khmer*, No. 134 – center; R. Brown, *The Ceramics of South-East Asia*, Plate L, No. 3; J. C. Shaw, *Introducing Thai Ceramics: also Burmese and Khmer*, page 21 – upper left (glazed light green); and Christie's (Melbourne), *Catalogue of The Brake-Lau-Eckermann Collection of South East Asian Ceramics, Textiles and Works of Art*, September 3, 1990, lot 147. Refer also to the other Khmer bird shaped limepots at K-007, K-011, and K-012.

K-034

Khmer large green glazed bowl with flared sides constricting slightly to the inverted mouthrim with rounded edge. Immediately under the mouthrim a single incised line. The light green glaze is transparent and crackled, with pronounced running on one side of the bowl. The interior covered with glaze, except for the rather narrow unglazed center. The sides taper in steadily, narrowing considerably at the base. Glaze ends at the broad flat base without footrim and with compact, fine grained, cream colored body darker shaded in areas.

D: 6 1/4 in. (15.8 cm.).

Khmer: 11th to 13th century.

Provenance: acquired in Phnom Penh (February 2003 - \$25).

Similar bowls are illustrated in R. Brown, *The Ceramics of South-East Asia*, Plate 20 - No. 67; Hiroshi Fujiwara, *Khmer Ceramics from the Kamratan Collection*, Plate 12; John Shaw, *Introducing Thai Ceramics: also Burmese and Khmer*, page 21 – lower left; and D. F. Franche, *Southeast Asian Ceramics*, No. 6.

Refer also to V-083 for a Vietnamese bowl similar in shape and size dated to the 13th to 14th century.

K-035

Khmer large covered box with flattened cover with sunken nipped center. The center of the cover encircled by a lightly incised border and surrounded by oblique gouge marks - all enclosed within a double incised line border. Carved grooves radiate down the sides of the cover and down the lower section of the box representing the sections of a fruit. The grooves end just above the flat base. The glaze of the box is completely eroded exposing the compact body, which is light beige colored with some areas tinged russet. A lengthy Khmer inscription written in ink appears on the sides of the interior of the cover.

D: 4 7/8 in. (12.3 cm.).

Khmer: 11th to 13th century.

Provenance: acquired in Phnom Penh (February 2003 - \$15).

Compare with the covered boxes illustrated in Hiroshi Fujiwara, *Khmer Ceramics from the Kamratan Collection*, Plate 6 and Plate 7.

(Search Term: base mark.)



K-036

Khmer lenticular shaped oil jarlet, the dark brown glaze now substantially eroded. Decorated low on the flattened shoulders with a band of chevron shaped incising enclosed within an incised triple line border below and a quadruple line border above. Another band of chevron incising, similarly enclosed, is repeated high on the shoulders just below the mouthrim. The thickened mouthrim has a beveled edge. Lower body is encircled by a carved groove. Stoutly potted broad base is slightly concave with fine-grained dark beige colored body.

D: 5 3/4 in. (14.6 cm.).

Khmer: 11th to 13th century.

Provenance: acquired in Phnom Penh (February 2003 - \$30).

Compare with the lenticular shaped jarlets illustrated in Hiroshi Fujiwara, *Khmer Ceramics from the Kamratan Collection*, Plate 48 (glazed green); and W. Willets, *Ceramic Art of Southeast Asia*, No. 3. The other lenticular shaped oil jarlets at K-023 and K-030 may also be referred to.



K-037

Khmer gourd shaped bottle with bulbous lower section decorated with an incised groove above the base. A sharp edged carved ridge, enclosed within incised line borders, separates the lower section from the unadorned upper portion. Three incised lines encircle the bottom of the slightly constricting neck with flared mouthrim. The dark brown crackled glaze, now substantially deteriorated, originally extended to the base. A narrow carved gouge immediately above the concave base with no footrim. Body is rather coarse textured and shades in color from beige to russet.

H: 6 1/4 in. (15.8 cm.).

Khmer: 12th to 13th century.

Provenance: Banteay Meanchey Province excavations, Cambodia – acquired in Phnom Penh (February 2003 - \$15).

Compare with the smaller gourd shaped jarlet illustrated in Hiroshi Fujiwara, *Khmer Ceramics from the Kamratan Collection*, Plate 67. Refer also to K-002 for a smaller gourd shaped pot, which is similarly shaped.



K-038

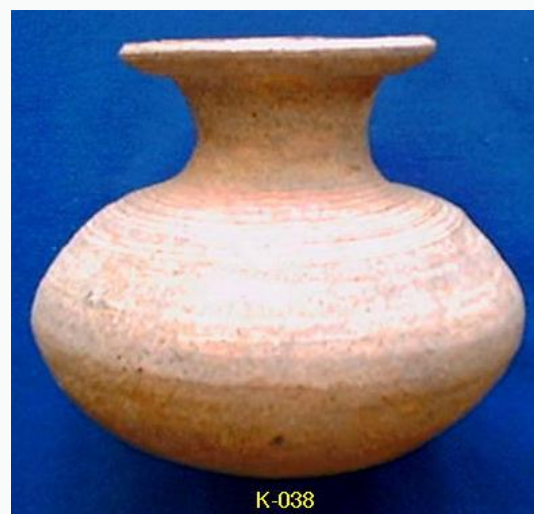
Khmer flattened globular shaped jarlet with wide flared rim with rounded edge, relatively narrow mouth, and slightly spreading high neck. A carved groove encircles the flattened edge of the flared mouthrim. The gently sloping shoulders are encircled by a wide band of incised decorative lines. Body is undecorated and slopes rather abruptly to the base. Concave base is incised with a base mark in the form of what appear to be two Khmer characters filled with reddish brown slip. Body material is light grayish-brown with coarse textured darker speckling overall.

H: 4 1/8 in. (10.4 cm.).

Khmer: 13th century.

Provenance: Kampong Cham Province excavations, Cambodia - acquired in Phnom Penh (February 2003 - \$10).

Compare with the similarly shaped and decorated smaller jarlet at K-020.



K-039

Ankor Borei stem-dish with the narrow mouthrim everted and flattened, shallow body curving in sharply to the rather high spreading stand, and flared foot with rounded edge. Fine-grained body is light brick-red shading to lighter and darker tones in areas. Center of the base is deeply recessed and the flatten perimeter scored with rather wide, lightly etched, concentric grooving.

D: 2 3/4 in. (6.9 cm.).

Khmer: 3rd century B.C. to 2nd century A.D. - (provisional dating).

Provenance: acquired in Phnom Penh (February 2003 - \$3).

