

EXHIBIT 2 - VUNG TAU BASE MARKS DESCRIPTIONS

Catalogue entries for:

- C-033 (1 to 11 of 11)
- C-065 (1 to 3 of 3)
- C-093 (1 to 27 of 27)
- C-128
- C-129 (1 to 3 of 3)
- C-141 (1 to 3 of 3)
- C-157 (1 to 42 of 42)

These follow further below and provide additional details for the porcelains with the base marks.

The Vung Tau shipwreck was discovered close to Cau Islet Ba Ria, approximately 15 kilometers from Hon Cau Island, in Vung Tau Province, southern Vietnam at a depth of 40 meters just prior to June 1990. The Vietnam Salvage Corporation (Visal) conducted a preliminary excavation of the wrecksite from June to August 1990. A license to excavate the shipwreck in a joint venture with Visal was obtained by Sverker Hallstrom, and the primary excavation was directed by Michael Flecker from 23 March 1991 to 2 July 1991. A total of about 60,000 ceramics dateable to approximately the year 1690 of the Kangxi reign (1662 to 1722) of the Qing Dynasty were recovered, this included 48,000 items of export and provincial porcelain. The date of 1690 is derived from an ink stick included in the cargo and dated accordingly. All of the ceramics were Chinese wares and primarily consisted of Jingdezhen blue and white porcelain in a variety of shapes.

C-033

Vung Tau shipwreck study collection shards (11), an assortment of rim shards and base fragment medallions decorated with floral motifs in a strong and vibrant tone of underglaze blue. The base fragments (shards No. 1 to No. 9) also include varying portions of the corresponding cavettos and rims. They all have an underglaze blue mark within a double circle.

Shard No. 1 and No. 3 are base fragments from dishes with the cavetto and exterior molded into small polygon shaped panels and filled with floral and leaf sprays. The central medallions are adorned with a bird on branch surrounded by densely packed foliage. Shard No. 2, No. 6, and No. 9 are also base fragments from dishes and are decorated on the sides of the interior with polygon shaped panels containing cross hatched flowering bushes. The central medallions contain a cross-hatched spreading tree surrounded by foliage. Exterior is sparsely adorned with a spreading leaf spray.

Shard No. 4, No. 5, No. 7, and No. 8 are base fragments from cups with the sides also molded into small polygon shaped panels (large panels and no molding on No. 4) and filled with floral and leaf sprays. The central medallions are adorned with a blossom roundel. The fragments of the rim of a cup (shard No. 10 and No. 11) are molded with small polygon shaped panels filled with floral and leaf sprays on the exterior. At the everted mouthrim a narrow band of cross-hatched diaper, repeated on the interior, with the interior sides undecorated. (Continued)

C-033 (Continued)

The footrim on the dishes is wedge shaped; on the cups the foot is nearly vertical on the exterior and slightly outward sloping on the interior. Glazed base of the fragments is slightly convex, with the exposed biscuit at the unglazed footrim milky white, very fine textured, and smooth.

Cup fragment No. 4 is inscribed in black ink with “HC 90-S-1217,” which is the original artifact registration number assigned during the cataloging of the shipwreck recoveries. Base marks are inscribed in underglaze blue within a double circle on these study collection shards as follows: *lingzhi* fungus - No. 1, No. 3, No. 5, No. 7 and No. 8; double circle only – No. 2; dragonfly - No. 4; and bee - No. 6 and No. 9.

D: 5 in. (12.6 cm.) – No. 1 to 2 5/16 in. (5.9 cm.) – No. 11.

Qing: Kangxi period (1662 to 1722) - circa 1690.

Provenance: Vung Tau shipwreck, Vietnam - acquired in Saigon.

Corresponding items in the same series are illustrated in Christie’s (Amsterdam), *The Vung Tau Cargo, Auction Catalogue, April 7 & 8, 1992*: lot 794 (includes saucers No. 1 and No. 3); lot 831 (includes saucers No. 2, No. 6 and No. 9); lot 801 (includes cup No. 4); lot 793 (includes cups No. 5, No. 7, No. 8, No. 10 and No. 11). There are additional Vung Tau shards with underglaze blue base marks at C-065, C-093, C-129, C141, and C-157, along with a beaker vase with gilded base at C-128. Also, a summary and brief study of this subject is included as a separate Paper - Vung Tau Base Marks.

C-065

Vung Tau shipwreck study collection shards (3), decorated in a strong and vibrant tone of underglaze blue with an assortment of motifs.

They each have an underglaze blue base mark.

- **Shard No. 1** - fragment from a hexagonal sided small vase with stepped foot and deep-set base with the underglaze blue Chinese character *wan* (ten thousand). The sides are decorated with panels alternately depicting a riverine landscape scene and containing floral jardinières; above the foot is a band of outlined chevron diaper.
- **Shard No. 2** - fragment from a cup with the exterior sides adorned with panels containing cross-hatched flowering bushes. The central medallion contains a cross-hatched leaf form surrounded by foliage. The sides of the interior are plain except for a narrow band of cross-hatched diaper at the everted mouthrim. Base mark of a crouching mouse within a double circle is inscribed in underglaze blue.
- **Shard No. 3** - fragment from a small saucer with the exterior sides adorned with panels containing floral sprays. The central medallion has a lotus spray surrounded by leaves - all within a double circle. Base mark of a lotus in outline form is inscribed in underglaze blue.

The footrim on the cup and saucer is nearly vertical on the exterior and slightly outward sloping on the interior, and the glazed base is slightly convex. On all of the fragments the exposed biscuit at the unglazed footrim is milky white, very fine textured, and smooth.

(Continued)

C-065 (Continued)

L: 3 5/8 in. (9.0 cm.) – No. 1;

H: 2 1/4 in. (5.8 cm.) – No. 2;

D: 2 3/16 in. (5.5 cm.) – No. 3.

Qing: Kangxi period (1662 to 1722) - circa 1690.

Provenance: Vung Tau shipwreck, Vietnam - acquired in Saigon.

Similar items are illustrated in Christie's (Amsterdam), *The Vung Tau Cargo, Auction Catalogue, April 7 & 8, 1992*: page 33, lot 149 and page 105, lot 773 (vases in same series as shard No. 1); and page 113, lot 831 (taller cup with decoration very similar to shard No. 2).

Refer also to the following illustrations in Jorg and Flecker, *Porcelain from the Vung Tau Wreck: the Hallstrom Excavation*: page 43, Fig. 6 - left (vase in same series as shard No. 1); and page 57, Fig. 32 - left (octagonal cup with scalloped mouthrim cup with decoration very similar to shard No. 2).

There are additional Vung Tau shards with underglaze blue base marks at C-033, C-093, C-129, C-141 and C-157, along with a beaker vase with gilded base at C-128. Also, a summary and brief study of this subject is included as a separate Paper - Vung Tau Base Marks.



C-093

Vung Tau shipwreck study collection shards (27), an assortment of base fragment medallions from dishes, cups, bowls and vases decorated in a strong and vibrant tone of underglaze blue with a variety of motifs. They each have an underglaze blue base mark. Details for each of the shards are as follows:

CATALOGUE NUMBER	BASE MARK	FORM	PRIMARY DECORATIVE MOTIF	D/H: CM
C-093 (1 of 27)	<i>Ding</i> (vessel) with 4 legs in double circle	Dish	Floral sprays in radiating molded panels, large spray in center.	D: 15.8
C-093 (2 of 27)	<i>Ding</i> (vessel) with 4 legs in double circle	Dish	Floral sprays in radiating molded panels, large spray in center.	D: 15.8
C-093 (3 of 27)	Lozenge with ribbons & streamers in double circle	Vase	Skewed panels with cross-hatched leaf sprays and trailing tendrils.	H: 13.0
C-093 (4 of 27)	Cross-hatched square in double circle	Dish	In the center two Western royal personages; ten surrounding panels of supplicants alternating with leaf sprays.	D: 13.4
C-093 (5 of 27)	Cross-hatched square in double circle	Cup	Floral sprays with trailing tendrils, shaded leaf tip border.	D: 5.1
C-093 (6 of 27)	Cross-hatched square in double circle	Cup	Leaf sprays with cross-hatching on octagon sides, cross-hatched floral spray in center.	D: 5.5
C-093 (7 of 27)	Conch with streamers in double circle	Dish	Two phoenix amid large floral sprays - chrysanthemum & peony	D: 11.8
C-093 (8 of 27)	Conch with streamers in double circle	Bowl	Floral sprays with trailing tendrils on sides, floral spray in double circle in center.	D: 7.7
C-093 (9 of 27)	Conch with streamers in double circle	Cup	Floral sprays in molded panels on sides, floral spray in center.	D: 5.6
C-093 (10 of 27)	Gourd with streamers in double circle	Dish	Phoenix flanked by large floral sprays - chrysanthemum & peony.	D: 11.7
C-093 (11 of 27)	Precious jewel or pearl with ribbons & streamers in double circle	Vase	Floral sprays in molded panels emerging from ornamental rocks.	D: 7.4
C-093 (12 of 27)	Commendation mark in double circle, six character (Variant No. 1)	Dish	Buddha reserved in white sitting under an umbrella surrounded by four similar Buddha figures.	D: 11.7
C-093 (13 of 27)	Cross-hatched lozenge with ribbons & streamers in double circle	Bowl	Leaf sprays with cross-hatching on sides, similarly accented floral spray in double circle in center.	D: 8.6

(Continued)

C-093 (Continued)

CATALOGUE NUMBER	BASE MARK	FORM	PRIMARY DECORATIVE MOTIF	D/H: CM
C-093 (14 of 27)	Cross-hatched lozenge with ribbons & streamers in double circle	Bowl	Leaf sprays with cross-hatching on sides, similarly accented floral spray in double circle in center.	D: 8.0
C-093 (15 of 27)	Twin fish in double circle (Variant No. 1)	Cup	Floral sprays with trailing tendrils on sides, floral spray in center.	D: 6.1
C-093 (16 of 27)	Twin fish in double circle (Variant No. 1)	Cup	Floral sprays & shaded leaf tip border on sides, floral spray in center	D: 5.2
C-093 (17 of 27)	Double circle only	Cup	Panels of floral sprays alternating with leaf sprays on octagon sides, floral spray enclosed by double line border in center.	D: 6.4
C-093 (18 of 27)	Double circle only	Cup	Panels of floral sprays alternating with leaf sprays on octagon sides, floral spray enclosed by double line border in center.	D: 5.3
C-093 (19 of 27)	Lotus in outline form	Dish	Floral spray surrounded by eight panels with similar floral sprays.	D: 11.4
C-093 (20 of 27)	Lotus in outline form	Dish	Floral spray surrounded by eight panels with similar floral sprays.	D: 10.6
C-093 (21 of 27)	Lotus in outline form	Cup	Panels of floral sprays on the sides, floral spray enclosed in double circle in center.	D: 6.6
C-093 (22 of 27)	<i>Lingzhi</i> fungus	Vase	Floral spray panels, band of blossoms and tendrils at base.	H: 6.7
C-093 (23 of 27)	Artemisia leaf with cross-hatching	Vase	Ornamental rock with floral sprays, band of blossoms at base.	D: 5.3
C-093 (24 of 27)	Artemisia leaf with cross-hatching	Vase	Panels of floral sprays.	D: 4.4
C-093 (25 of 27)	Artemisia leaf with cross-hatching	Vase	Skewed panels with cross-hatched leaf sprays.	D: 4.1
C-093 (26 of 27)	Swastika <i>or wan</i> character (representing ten thousand)	Vase	Panels with riverine landscape scenes alternating with floral sprays; a band of outlined chevron diaper at base.	H: 5.7
C-093 (27 of 27)	Swastika <i>or wan</i> character (representing ten thousand)	Vase	Panels with riverine landscape scenes alternating with floral jardinières; a band of outlined chevron diaper at base.	H: 6.2

(Continued)

C-093 (Continued)

The footrim on five of the dishes (No. 1, No. 2, No. 4, No. 19 and No. 20) is wedge shaped and the base slightly convex. On three of the dishes (No. 7, No. 10 and No. 12) the foot slants nominally inward on the exterior and the slightly convex base is much more deep-set. On six of the cups (No. 6, No. 9, No. 15, No. 16, No. 17 and No. 21) and two of the bowls (No. 8 and No. 14) the foot is nearly vertical on the exterior and slightly outward sloping on the interior with the base slightly convex. On cup No. 5 the foot slants outward on the exterior; and on bowl No. 13 and bowl No. 14 the foot is inward sloping on the exterior.

On seven of all eight of the vase forms (the exception being vase No. 25) the footrim is slightly recessed from the lowermost portion of the vase. On four of the vases (No. 3, No. 11, No. 24 and No. 25) the base is flat; and on No. 22 the center with the base mark is markedly recessed. The recessed base is very deep-set on three of the vases (No. 23, No. 26 and No. 27). There is slight marine encrustation on vase No. 11. On all of the Vung Tau shipwreck study collection shards the exposed biscuit at the unglazed footrim is milky white, very fine textured, and smooth.

D/H: indicated on the matrix above.

Qing: Kangxi period (1662 to 1722) - circa 1690.

Provenance: Vung Tau shipwreck, Vietnam - acquired in Saigon.

(Continued)

C-093 (Continued)

There were no saucers comparable to No. 4 in the auction; however, refer to Monique Crick, et. al., *L' Odyssee De La Porcelaine Chinoise* – Exhibition Catalogue, page 202, No. 153 (saucer in the same series as saucer No. 4 is illustrated with accompanying cup and cover). The auction did include covers in this series as illustrated in Christie's (Amsterdam), *The Vung Tau Cargo, Auction Catalogue, April 7 & 8, 1992*, lot 856 – 25 covers with same motif as saucer No. 4 (the only ones included in the auction). A cover in this same series is also illustrated in Jorg and Flecker, *Porcelain from the Vung Tau Wreck: the Hallstrom Excavation*, page 60, Fig. 40. The sale price at auction for the 25 covers in lot 856 was Dfl. 24,150 (US\$13,197 or \$528 each). Refer as well to C-036 (No. 6 of 6) for another cover from this series, which was also recovered from the Vung Tau shipwreck.

Corresponding items in the same series as these shards are illustrated in Christie's (Amsterdam), *The Vung Tau Cargo, Auction Catalogue, April 7 & 8, 1992* as follows: page 115, lot 844 (shard No. 1 and shard No. 2); page 119, lot 875 (shard No. 10); page 119, lot 874 (shard No. 12); and page 33, lot 149 and page 105, lot 773 (vases in same series as shard No. 27). Refer also to the following illustrations in Jorg and Flecker, *Porcelain from the Vung Tau Wreck: the Hallstrom Excavation*: page 43, Fig. 6 - left (vase in same series as shard No. 27); and page 59, Fig. 38 - right (saucer with scalloped mouthrim with decoration very similar to shard No. 2).

There are additional Vung Tau shards with underglaze blue base marks at C-033, C-065, C-129, C-141 and C-157, along with a beaker vase with gilded base at C-128. Also, a summary and brief study of this subject is included as a separate Paper - Vung Tau Base Marks.

C-128

Tall beaker vase decorated in underglaze blue with a variety of blossoms with long curving stems extending from below the slightly flared mouth to just above the foot. Rendered in outline form with hatched line filler the blossoms include broad, spreading peonies with serrated edge petals, chrysanthemum and lotus. Tightly spaced curling leaves extend from all the stems resulting in a densely packed decoration overall.

The stepped foot is surmounted by a narrow flange and encircled by two sprawling leaf sprays enclosed within double line borders. Channeled unglazed footrim projects slightly from the narrow deep-set glazed base. Significant portions of the gilding originally covering the base remain intact. Also visible on the base inscribed in black ink are traces of the original identification number assigned during the cataloging of the shipwreck recoveries.

H: 6 7/8 in. (17.4 cm.).

Qing: Kangxi period (1662 to 1722) - circa 1690.

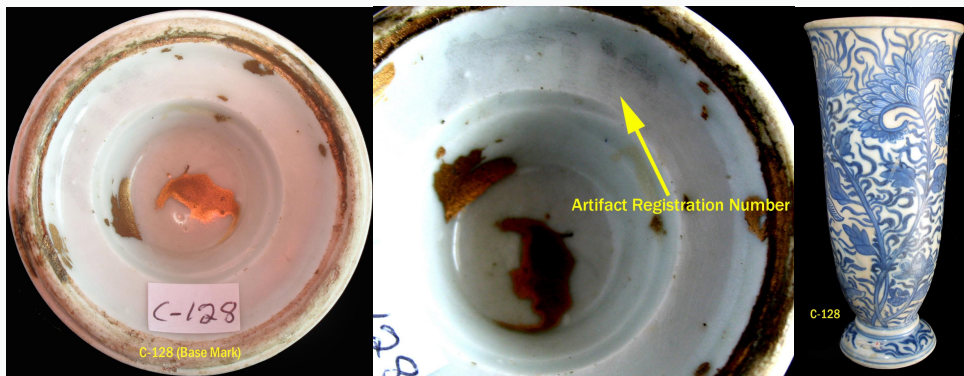
Provenance: Vung Tau shipwreck, Vietnam - from an old Vietnamese collection formed at the time of the shipwreck discovery - acquired in Saigon.

Vases in same series are illustrated in Christie's (Amsterdam), *The Vung Tau Cargo, Auction Catalogue, April 7 & 8, 1992*, page 23, lot 57 to lot 63; and in Jorg and Flecker, *Porcelain from the Vung Tau Wreck: the Hallstrom Excavation*, page 69, Fig. 57. (Continued)

C-128 (Continued)

There are various Vung Tau shards with underglaze blue base marks at C-033, C-065, C-093, C-129, C-141 and C-157. Also, a summary and brief study of this subject is included as a separate Research Paper - Vung Tau Base Marks.

This beaker vase represents the only known example of the use of gilding on the base of ceramics recovered from the Vung Tau shipwreck.



C-129

Vung Tau shipwreck study collection shards (3), decorated in a strong and vibrant tone of underglaze blue with an assortment of motifs.

They each have an underglaze blue base mark.

- **Shard No. 1** - fragment from a small vase with lightly molded paneling on the sides, stepped foot and deep-set base with a mark consisting of an underglaze blue *lingzhi* (fungus of immortality). The sides are decorated with leaves containing hatched line filler and stems. The stepped foot is surmounted by a narrow flange and encircled by five blossom sprays enclosed within double line borders. Channeled footrim is unglazed, projects upward slightly, and extends in a wide curved manner from the narrow deep-set glazed base.
- **Shard No. 2** - fragment from a cup with the sides molded into small polygon shaped panels and filled with floral sprays with leafy stems on the exterior. The sides of the interior are plain with a small floral spray in the central medallion. Base mark of a *lingzhi* (fungus of immortality) within a double circle is inscribed in underglaze blue.
- **Shard No. 3** - fragment from a small bowl with the exterior sides adorned with leaf sprays, double line border under the upright mouthrim, repeated on the interior. The interior further adorned with a leaf spray and ornamental rock in the central medallion encircled by a double line border. Tall foot is slightly spreading and surrounded by a double line border. Base mark may be best described as a variant of a *Ding* (four legged vessel) within a double circle inscribed in underglaze blue.

(Continued)

C-129 (Continued)

On all of the fragments the exposed biscuit at the unglazed footrim and fractures is milky white, very fine textured, and smooth. Also on all the fragments the base is glazed and flat.

H: 2 in. (5.1 cm.) – No. 1;

H: 2 3/8 in. (6.2 cm.) – No. 2;

H: 2 3/8 in. (6.1 cm.) – No. 3.

Qing: Kangxi period (1662 to 1722) - circa 1690.

Provenance: Vung Tau shipwreck, Vietnam - acquired in Saigon.

A cup in the same series as shard No. 2 is illustrated in Christie's (Amsterdam), *The Vung Tau Cargo, Auction Catalogue, April 7 & 8, 1992*, lot 793.

There are additional Vung Tau shards with underglaze blue base marks at C-033, C-065, C-093, C-141 and C157, along with a beaker vase with gilded base at C-128. Also, a summary and brief study of this subject is included as a separate Paper - Vung Tau Base Marks.



C-141

Vung Tau shipwreck study collection shards (3), decorated in a strong and vibrant tone of underglaze blue with an assortment of motifs.

They each have an underglaze blue base mark.

- **Shard No. 1** - base fragment medallion and sides of a dish decorated with five roundels each with two birds and two blossoms reserved in white on a blue ground; the roundels separated by small blossoms and by large leaf forms pendant from an arabesque-like scroll just under the upright rim. Underside is plain and the deep-set base has an underglaze blue six Chinese character commendation mark in a double circle.
- **Shard No. 2** - fragment from a dish adorned with vignettes variously containing a musician playing a stringed instrument, a row of European style houses, a ship's officer peering from the stern of a ship, and a smaller row of buildings. The vignettes are interspersed with stylized cloud scrolls and surround the central medallion containing a broad floral spray. Exterior is unadorned with wedge shaped foot and a base mark in the form of a small cross-hatched square within a double circle inscribed in underglaze blue.
- **Shard No. 3** - fragment from a small saucer adorned with song birds perched among tightly spaced leaf sprays with tendrils emerging. Plain underside with wedge shaped foot and underglaze blue base mark of twin fish in a double circle small in diameter.

(Continued)

C-141 (Continued)

On all of the fragments the exposed biscuit at the unglazed footrim and fractures is milky white, very fine textured, and smooth.

D: 4 7/8 in. (12.5 cm.) – No. 1;

D: 4 1/16 in. (10.3 cm.) – No. 2;

D: 3 3/4 in. (9.5 cm.) – No. 3.

Qing: Kangxi period (1662 to 1722) - circa 1690.

Provenance: Vung Tau shipwreck, Vietnam - acquired in Saigon.

Similar items are illustrated in Christie's (Amsterdam), *The Vung Tau Cargo, Auction Catalogue, April 7 & 8, 1992*: lot 877 (dish in same series as shard No. 1), and lot 799 (dish in same series as shard No. 3). Refer also to the following illustration in Jorg and Flecker, *Porcelain from the Vung Tau Wreck: the Hallstrom Excavation*: page 59, Fig. 37 (dish in same series as shard No. 3). There were only 20 dishes included in the Christie's auction with the motif of shard No. 1, attesting to its rarity. With respect to shard No. 2, there were no items included in the Christie's auction with its motif. In fact, this shard is the only known representation of the motif on porcelains recovered from the Vung Tau shipwreck.

There are additional Vung Tau shards with underglaze blue base marks at C-033, C-065, C-093, C-129 and C-157, along with a beaker vase with gilded base at C-128. Also, a summary and brief study of this subject is included as a separate Paper - Vung Tau Base Marks.

C-157

Vung Tau shipwreck study collection shards (42), an assortment of base fragment medallions from dishes, cups, bowls and vases decorated in a strong and vibrant tone of underglaze blue with a variety of motifs. They each have an underglaze blue base mark. Glazed bases are flat on nearly all the shards except for the very slightly convex bases on the dishes at No. 14, No. 15, No. 17 and No. 18 as well as the bowl at No. 23. The exposed biscuit on the shards at the unglazed footrim and fractures is milky white, very fine textured, and smooth (the bowls at No. 37, No. 38 and No. 39 have a somewhat less refined body). Foot, footrim and base are all very carefully finished with consummate skill and precision. On all the shards the foot is vertical on the interior and exterior, except for the wedge shaped foot on the dishes at No. 1, No. 2 and No. 25.

The fragments do exhibit considerable variety in the construction and profile of foot and base: high foot with deeply recessed base on vases (No. 7, No. 12, No. 29 to No. 31 and No. 40), moderately high foot with somewhat deep-set base on bowls (No. 21 to No. 23, No. 37 and No. 38), wedge shape foot with shallow base on dishes (No. 1, No. 2 and No. 25), and stepped type footrim with a variety of bases as follows -

- Stepped footrim with shallow base - No. 27, No. 28 and No. 36.
- Stepped footrim with deep-set base - No. 7, No. 12, No. 29 to No. 31 and No. 40.
- Stepped footrim with the base sunken in center - No. 34 and No. 35.

(Continued

C-157 (Continued)

The very deep-set bases on vases No. 7, No. 12 and No. 30 provide an interesting contrast with the very shallow base on the dish at No. 25. Many of the fragments have marine encrustation to some extent ranging from considerable (No. 33, No. 37 and No. 42) to minimal (No. 2 and No. 10).

The table which follows below describes each base fragment medallion in terms of base mark, form, primary decorative motif, and Diameter (D) or Length (L) of the individual shard.

Qing: Kangxi period (1662 to 1722) - circa 1690.

Provenance: Vung Tau shipwreck, Vietnam - acquired in Saigon.

There are additional Vung Tau shards with underglaze blue base marks at C-033, C-065, C-093, C-129 and C-141, along with a beaker vase with gilded base at C-128. Also, a summary and brief study of this subject is included as a separate Paper - Vung Tau Base Marks.

Corresponding items in the same series as these shards are illustrated in Christie's (Amsterdam), *The Vung Tau Cargo, Auction Catalogue, April 7 & 8, 1992* as follows: page 115, lot 844 (shards No. 1 and No. 2); page 28, lot 98 (shard No. 7); page 119, lot 874 (shards No. 13, No. 15 and No. 18); page 119, lot 877 (shard No. 16); page 33, lot 149 and page 105, lot 773 (shards No. 30 and No. 31 with Chinese character *wan* - ten thousand); page 119, lot 879 (shards No. 37 and No. 38); and page 119, lot 879 - second stack of bowls from left, fourth bowl in stack (shard No. 39). Refer also to the following illustrations in Jorg and Flecker, *Porcelain from the Vung Tau Wreck: the Hallstrom Excavation*: page 79, Fig. 71 a. (dish in same series as shard No. 16); page 43, Fig. 6 - left (vase in same series as shards No. 30 and No. 31); and page 81, Fig. 76 - second stack of bowls from left, fourth bowl in stack (bowl in same series as shard No. 39).

(Continued)

C-157 (Continued)

CATALOGUE NUMBER	BASE MARK	FORM	PRIMARY DECORATIVE MOTIF	D/H: CM
C-157 (1 of 42)	<i>Ding</i> (vessel) with 4 legs in double circle	Dish	Large spray in center - blossoms alternating with butterflies.	D: 11.2
C-157 (2 of 42)	<i>Ding</i> (vessel) with 4 legs in double circle	Dish	Floral sprays in radiating panels, large spray in center - blossoms alternating with butterflies.	D: 11.3
C-157 (3 of 42)	<i>Ding</i> (vessel) with streamers in double circle	Dish	Roundel with two birds and blossoms reserved in white on a blue ground surrounded by four similar roundels; all separated by blossoms and large leaf forms.	D: 10.6
C-157 (4 of 42)	<i>Ding</i> (vessel) with streamers in double circle	Bowl	Leaf sprays and ornamental rock, trellis flanking.	D: 7.5
C-157 (5 of 42)	Lozenge with ribbons & streamers in double circle	Vase	Skewed panels with cross-hatched leaf sprays and trailing tendrils.	D: 7.8
C-157 (6 of 42)	Lozenge with ribbons & streamers in double circle	Vase	Skewed panels with cross-hatched leaf sprays and trailing tendrils.	D: 7.5
C-157 (7 of 42)	Lozenge with ribbons & streamers in double circle	Vase	Blossom sprays with adjoined leaf sprays.	D: 6.4
C-157 (8 of 42)	Cross-hatched square in double circle	Cup	Leaf sprays with cross-hatching on octagon sides, cross-hatched floral spray in center.	D: 5.3
C-157 (9 of 42)	Conch with streamers in double circle	Bowl	Floral sprays with trailing tendrils on sides, floral spray in double circle in center.	D: 7.5
C-157 (10 of 42)	Gourd with streamers in double circle	Dish	Large pine and prunus trees flanked by ornamental rock and bushes.	D: 11.3
C-157 (11 of 42)	Gourd with streamers in double circle	Dish	Large pine and prunus trees flanked by ornamental rock and bushes.	D: 7.8
C-157 (12 of 42)	Precious jewel or pearl with ribbons & streamers	Vase	Floral sprays in molded panels, blossom sprays with adjoined leaf sprays encircling foot.	D: 6.2
C-157 (13 of 42)	Commendation mark in double circle, six character (Variant No. 1)	Dish	Buddha reserved in white sitting under an umbrella surrounded by four similar Buddha figures.	D: 12.5
C-157 (14 of 42)	Commendation mark in double circle, six character (Variant No. 1)	Dish	Phoenix with outstretched wings in roundel form surrounded by four similar Phoenix and four blossom sprays.	D: 12.2
C-157 (15 of 42)	Commendation mark in double circle, six character (Variant No. 1)	Dish	Buddha reserved in white sitting under an umbrella surrounded by four similar Buddha figures.	D: 12.2

(Continued)

C-157 (Continued)

CATALOGUE NUMBER	BASE MARK	FORM	PRIMARY DECORATIVE MOTIF	D/H: CM
C-157 (16 of 42)	Commendation mark in double circle, six character (Variant No. 1)	Dish	Roundel with two birds and blossoms reserved in white on a blue ground surrounded by four similar roundels; all separated by blossoms and large leaf forms.	D: 12.1
C-157 (17 of 42)	Commendation mark in double circle, six character (Variant No. 1)	Dish	Phoenix with outstretched wings in roundel form surrounded by four similar Phoenix and four blossom sprays.	D: 11.9
C-157 (18 of 42)	Commendation mark in double circle, six character (Variant No. 1)	Dish	Buddha reserved in white sitting under an umbrella surrounded by four similar Buddha figures.	D: 11.4
C-157 (19 of 42)	Cross-hatched lozenge with ribbons & streamers in double circle	Bowl	Leaf sprays with cross-hatching on sides, similarly accented floral spray in double circle in center.	D: 8.6
C-157 (20 of 42)	Cross-hatched lozenge with ribbons & streamers in double circle	Bowl	Leaf sprays with cross-hatching on sides, similarly accented floral spray in double circle in center.	D: 7.5
C-157 (21 of 42)	Twin fish in double circle (Variant No. 2)	Bowl	Large chrysanthemum spray in center; overlapping leaf panels above foot.	D: 9.5
C-157 (22 of 42)	Twin fish in double circle (Variant No. 2)	Bowl	Large chrysanthemum spray in center; overlapping leaf panels above foot.	D: 9.3
C-157 (23 of 42)	Twin fish in double circle (Variant No. 2)	Bowl	Large chrysanthemum spray in center; overlapping leaf panels above foot.	D: 8.9
C-157 (24 of 42)	Double circle only	Cup	Panels of floral sprays alternate with leaf sprays on octagon sides; floral spray in center.	D: 5.1
C-157 (25 of 42)	Lotus in outline form	Dish	Floral spray surrounded by eight panels with similar floral sprays.	D: 9.4
C-157 (26 of 42)	Lotus in outline form	Cup	Panels of floral sprays on sides, floral spray in center.	D: 5.8
C-157 (27 of 42)	Artemisia leaf with cross-hatching	Vase	Floral sprays and leaf sprays.	D: 4.7
C-157 (28 of 42)	Artemisia leaf without cross-hatching	Vase	Floral sprays and leaf sprays; double outlined vertical stalks.	D: 4.8
C-157 (29 of 42)	Swastika <i>or wan</i> character (representing ten thousand)	Vase	Band of overlapping leaf tips at base, and a band of outlined chevron diaper above.	D: 6.2
C-157 (30 of 42)	Swastika <i>or wan</i> character (representing ten thousand)	Vase	Panels with riverine landscape scenes alternating with floral sprays; a band of outlined chevron diaper at base.	H: 6.1

(Continued)

C-157 (Continued)

CATALOGUE NUMBER	BASE MARK	FORM	PRIMARY DECORATIVE MOTIF	D/H: CM
C-157 (31 of 42)	Swastika or wan character (representing ten thousand)	Vase	Panels with riverine landscape scenes alternating with floral jardinières; a band of outlined chevron diaper at base.	D: 4.8
C-157 (32 of 42)	<i>Lingzhi</i> fungus in double circle	Dish	Large pine and prunus trees flanked by ornamental rock and bushes.	D: 11.8
C-157 (33 of 42)	<i>Lingzhi</i> fungus in double circle	Cup	Landscape roundel with mountains and pavilion on the interior center, repeated on the exterior sides.	D: 7.7
C-157 (34 of 42)	<i>Lingzhi</i> fungus	Vase	Floral spray panels, band of leaf sprays at base.	D: 5.4
C-157 (35 of 42)	<i>Lingzhi</i> fungus	Vase	Floral spray panels, band of leaf sprays at base.	D: 5.1
C-157 (36 of 42)	<i>Lingzhi</i> fungus	Vase	Floral spray panels.	D: 4.9
C-157 (37 of 42)	Four character hall mark in double circle - (Variant No. 1)	Bowl	Large peony spray in center; peony scroll on exterior, band of dissolved leaf tips above foot.	D: 13.6
C-157 (38 of 42)	Four character hall mark in double circle - (Variant No. 1)	Bowl	Large peony spray in center; peony scroll on exterior, band of dissolved leaf tips above foot.	D: 13.8
C-157 (39 of 42)	Four character hall mark in double circle - (Variant No. 2)	Bowl	Rabbit amid clumps of grass in the center; seated lions at trellis fence on the exterior sides.	D: 15.2
C-157 (40 of 42)	Cash symbol with ribbons & streamers in double circle	Vase	Floral spray panels; band of leaf sprays at base, outlined overlapping leaf tips above.	H: 11.9
C-157 (41 of 42)	Plum (prunus) blossom in double circle	Cup	Monochrome white.	D: 6.1
C-157 (42 of 42)	Rhinoceros horn with streamers in double circle	Dish	Roundel with two birds and blossoms reserved in white on a blue ground surrounded by four similar roundels; all separated by large blossoms.	D: 11.1

© W. Kassela 2015 - all rights reserved, unauthorized reproduction prohibited.