

C-001

Blue and white saucer dishes (2 - pair) decorated in the central field with various flowering branches, including prunus, growing around a pierced ornamental rock; the petal-molded well decorated with lotus panels containing assorted floral sprays. The foliate mouthrim decorated with florettes in panels on a trellis border. Exterior is adorned with three sprawling floral sprays. On the base is an underglaze blue *lien hua* (lotus blossom) mark within a double circle.

D: 5 3/8 in. (13.5 cm.) - No. 1 and No. 2.

Qing: Kangxi period (1662 to 1722) - early 18th century.

Provenance: acquired in New York (August 1978 - \$90).

A very similar saucer dish is illustrated in D. F. Lunsingh Scheurleer, *Chinese Export Porcelain*, plate 141. Compare also with C-028, which represents a slightly smaller version of the saucers in this series.



## C-002

Fluted saucer dishes (2 - pair) with lobed rim, painted in a strong and vibrant tone of underglaze blue with graded washes in classic Kangxi style. The center decorated with birds among a flowering branch, which projects from an ornamental rock. Similarly decorated are the cavetto and rim, which are divided into five radiating panels, enclosed in a double line border. On the underside appear three floral sprays with a double line border at the foot. The lightly pinholed base contains the Chinese character *chi* (good fortune) rendered in underglaze blue within a double circle.

D: 6 1/2 in. (16.5 cm.) - No. 1 and No. 2.

Qing: Kangxi period (1662 to 1722).

Provenance: Sotheby's Auction (Hong Kong), 15 May 1976, lot 563 (May 1976 - \$444).

Refer to W. B. R. Neave-Hill, *Chinese Ceramics*, plate 155, illustrating the reverse of a larger - but similarly lobed and fluted dish of the Kangxi period.



**C-003**

Blue and white saucer dish, the central medallion painted with a confronted pair of stylized phoenix among cloud scrolls - all enclosed by a double line border, which is repeated at the slightly everted rim; the steeply rounded cavetto undecorated. A pair of phoenix in flight interspersed with cloud scrolls decorating the underside, with a single line border just below the rim; and a double line border encircling the base. A Qianlong six character underglaze blue reign mark in seal mark form on the center of the slightly convex broad base.

D: 6 1/2 in. (16.3 cm.).

Qing: Qianlong period (1736 to 1795).

Provenance: S. Marchant & Son, London (original Marchant sticker affixed) - acquired in London (August 1977 - \$696).

A very similar dish - of the Daoguang period (1821 to 1850) - is illustrated Christie Manson & Woods (New York) *Catalogue of Fine Chinese Ceramics and Works of Art*, June 2, 1989, lot 201; and another in Sotheby Parke Bernet (Hong Kong), *Catalogue of Chinese Ceramics*, May 27, 1978, lot 809.

**C-004**

Saucer dishes (2 - pair) decorated with a three blossom scroll of Indian lotus in the central field, the underglaze blue of strong intensity. The undecorated cavetto is enclosed by double line borders, and the rim is encircled by a demi-lotus scroll. The underside decorated with a lotus scroll consisting of six blossoms within double line borders. A Guangxu six character underglaze blue reign mark on the base.

D: 5 15/16 in. (15.1 cm.) - No. 1;

D: 6 in. (15.3 cm.) - No. 2.

Qing: Guangxu period (1875 to 1908).

Provenance: Luen Chai Curios, Hong Kong - acquired in Hong Kong (September 1976 - \$160).

A number of very similar dishes, with Guangxu marks, are published, including the following: C. Chou, *The Hollow Line in Dating Chinese Porcelain*, plate 19; H. A. Van Oort, *Chinese Porcelain of the 19th and 20th Centuries*, plate 63; Duncan Macintosh, *Chinese Blue and White Porcelain*, plate 65; H. Garner, *Oriental Blue and White*, plate 83B; Rose Kerr, *Chinese Ceramics: Porcelain of the Qing Dynasty 1644 - 1911*, page 73, Plate 51 - right; and Sotheby Parke Bernet (New York), *Catalogue of Chinese Ceramics and Works of Art*, September 18, 1981, lot 430.

C-005

Small saucer dishes (2 - pair) decorated in underglaze blue, with a confronting phoenix and dragon contesting a flaming pearl amid a background of cloud scrolls and flame motif. A band of trellis diaper encircles the slightly everted rim; and the underside is plain except for a double line border at the mouthrim and a single line border immediately above the shallow, constricted foot. The base contains a six Chinese character underglaze blue base mark, which has been translated as " Twentieth year of the Republic made".

D: 5 in. (12.6 cm.) - No. 1;

D: 4 7/8 in. (12.3 cm.) - No. 2.

Chinese Republic: 1931.

Provenance: Robert D. Thompson Auction (Hong Kong),  
27 April 1976, lot 91 (April 1976 - \$15).

A dish identified as early twentieth century - with a similarly styled dragon along with a comparable background of cloud scrolls, flames, and a flaming pearl - is illustrated by Duncan Macintosh, *Chinese Blue and White Porcelain*, plate 66.

It is also interesting to note that H. A. Van Oort, *Chinese Porcelain of the 19th and 20th Centuries*, page 161, indicates that only two dated pieces (one of which is blue and white) of "this period" - i.e. 1917 to 1937 are known to him.

C-006

Small thinly potted saucer dishes (2 - pair), with well- rounded cavetto and slightly everted rim, decorated in vivid dark cobalt blue with a confronted pair of dragons pursuing a flaming pearl amid flame motifs and cloud scrolls. Encircling the mouthrim a narrow band of twin/parallel elongated cloud scrolls, regularly interrupted by small stylized birds. The underside is devoid of decoration except for a double line border at the mouthrim, and a single line border just above the low, slightly inward sloping footring. The slightly convex broad base bears a six character underglaze blue Guangxu reign mark.

D: 5 11/16 in. (14.5 cm.) - No. 1;

D: 5 3/4 in. (14.6 cm.) - No. 2.

Qing: Guangxu period (1875 to 1908).

Provenance: Luen Chai Curios, Hong Kong - acquired in Hong Kong (September 1976 - \$180).



C-007

Large dish decorated in underglaze blue and copper-red with two birds perched in a flowering prunus tree facing two more similar birds perched below on a pierced ornamental rock. The bodies of the birds and the stamens of the prunus blossoms are painted in underglaze red, with the glaze covering the entire dish a distinct bluish-white tone. The lively drawn design covers the entire interior of the dish, which has rather steeply rounded sides and an upright rim with well rounded edge. The underside reveals an incised owner's mark consisting of two Chinese characters, along with four sketchily drawn leaf tips. The interior of the heavily constructed vertical foot - along with the convex base, which contains an illegible black ink inscription and reveals a rough brown/beige/gray splotched body - is unglazed

D: 10 in. (25.6 cm.).

Qing: early 19th century.

Provenance: acquired in Hong Kong (June 1976 - \$70).

A very similar dish is in the collection of the Victoria and Albert Museum - London (acquisition number not available at this writing). Very similar dishes were also recovered from the Diana Cargo shipwreck as illustrated in Christie's (Amsterdam), *Catalogue of The Diana Cargo, Chinese Export Porcelain and Marine Artefacts*, March 6 - 7, 1995 page 102, lot 837 and page 103, lot 846 (both from the Diana shipwreck - dated to 5 March 1817, 6:05 a.m.).

## C-008

Blue and white baluster shaped covered vases (2 - pair) from a three piece garniture set. Painted in graded washes of vibrant blue with four bands of various sized petal-shaped double lined panels, the main band having a very lightly molded outline of the lower border; the panels decorated with various flowering branches - including peony , chrysanthemum, daisy, and lily - growing from an ornamental rock. Floral sprays, above a band of cross-hatch diaper, around the neck; the knobbed cover with small petal-shaped floral panels. An illegible underglaze blue shop mark appears on the glazed base, which is pinholed, the well finished footrim grooved.

H (including cover): 9 in. (23.0 cm.) - No. 1 and No. 2.

Qing: Kangxi period (1662 to 1722) - late 17th to early 18th century,  
Provenance: Cale Antiques, London - acquired in London  
(October 1976 - \$382).

Refer to the comparable vase illustrated in D. F. Lunsingh Scheurleer, *Chinese Export Porcelain*, plate 98. Very similar vases (without an underglaze blue shop mark) were also recovered from the Vung Tau Cargo shipwreck as illustrated, for example, in Christie's (Amsterdam), *The Vung Tau Cargo, Auction Catalogue, April 7 & 8, 1992, page 89, lot 631.*



C-009

Ink box rectangular shaped blue and white, decorated on the top of the slightly domed cover with a stylized “monster” mask motif surrounded by a trellis border. The sides of the cover are decorated with a tripartite scrolled design enclosed within a double line border, which is all repeated on an accentuated scale on each of the sides of the lower part of the box. The roughly finished footrim reveals a rather coarse body, with a mildly convex glazed base tinged bluish-white.

L: 4 3/4 in. (11.9 cm.);

W: 3 1/2 in. (8.8 cm.);

H (including cover): 2 in. (5.1 cm.).

Qing: 19th to early 20th century.

Provenance: acquired in Hong Kong (April 1976 - \$35).

S. T. Yeo and J. Martin illustrate a very similar ink box in *Chinese Blue & White Ceramics*, Plate 191, No. 375.



## C-010

Polychrome wine cup decorated in soft enamel colors, including turquoise and pink, with the eight symbols of Buddhism arranged in four pairs encircled by waving fillets. Borders of *ruyi*-shaped fillets at the mouthrim and at the footrim, with the interior of the cup undecorated. The recessed base contains a Xianfeng six character iron-red reign mark in seal mark form.

D: 2 3/4 in. (7.0 cm.).

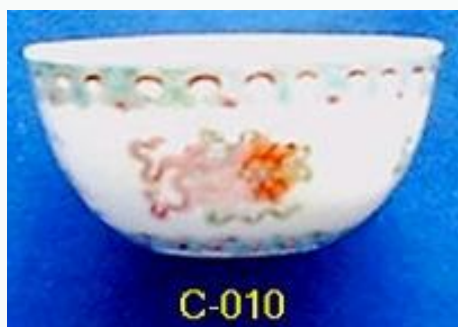
Qing: Xianfeng period (1851 to 1861).

Provenance: Luen Chai Curios, Hong Kong - acquired in Hong Kong.

Formerly in the collection of the judge who presided over the notorious Hong Kong police corruption trial of 1974 in which chief superintendent Peter Godber was the principal defendant.

(March 1975 - \$30).

A pair of very similar wine cups, with the decoration incorrectly identified as the “Eight Taoist Emblems” is illustrated by Oriental Ceramic Society of Hong Kong, *Ch’ing polychrome Porcelain*, No. 113. S. Bushell, *Oriental Ceramic Art*, figure 38, may also be referred to for the illustration of a similar Daoguang (1821 to 1850) dated wine cup.



C-011

Doucai bowl with steeply rounded sides enameled on the exterior with six stylized lotus blossoms in pale iron-red, enclosed by elaborate foliate scrollwork above a band of *ruyi* heads alternately colored in blue, red and very pale green around the base - all within pale underglaze blue outlines. At the foot, a pale underglaze blue double line border which is repeated around the mouthrim, with the interior plain. A Daoguang six character underglaze blue reign mark in seal mark form on the base.

D: 5 11/16 in. (14.4 cm.).

Qing: Daoguang period (1821 to 1850).

Provenance: acquired in New York (July 1979 - \$450).

A pair of very similar bowls is illustrated in Sotheby Parke Bernet (Hong Kong), *Catalogue of the Edward T. Chow Collection (Part Three): Ming and Qing Porcelain*, May 19, 1981, lot 554. Another bowl in this series is illustrated in Christie's (Hong Kong), *Catalogue of Important Chinese Ceramics and Works of Art*, 1 June 2011, lot 4066 (sold - US\$51,658).

**(REVISED - 16 September 2011)**

**C-012**

Small dragon bowl with rounded sides painted in underglaze blue with a dragon chasing a flaming pearl amongst clouds. The decoration continues from the interior to the exterior of the bowl extending over the upright mouthrim. The glaze of a distinct bluish-white hue, and the base with an underglaze blue mark in the form of a bee within a double circle.

D: 3 3/4 in. (9.5 cm.).

Later Qing: late 19th to early 20th century.

Provenance: acquired in London (October 1976 - \$28).

Compare with the earlier Qing dragon bowls illustrated by H. Munsterberg, *Dragons in Chinese Art*, No. 55; C. S. Woodward, *Oriental Ceramics at the Cape of Good Hope, 1652 - 1795*, No. 52; and Sotheby Parke Bernet (Hong Kong), *Catalogue of Chinese Ceramics*, May 26, 1980, plate 10, lot 510.



**C-013**

Copper-red decorated vase with the solidly potted pear-shaped body tapering to a tall slender neck. Painted in a very good tone of underglaze copper-red with an erect crane amidst a rocky landscape surmounted by a pine tree. The wide foot slightly splayed, and the flat base glazed.

H: 6 5/8 in. (16.7 cm.).

Qing: Jiaqing period (1796 to 1820).

Provenance: Luen Chai Curios, Hong Kong - acquired in Hong Kong (August 1976 - \$200).



**C-014**

Ming style blue and white vase, pear shaped with a tall neck and trumpet shaped mouth, painted in a contrived “heaped and piled” effect with a densely foliated chrysanthemum scroll in the central zone, *ruyi* lappets around the shoulder below a narrow band of stylized scroll, and stiff plantain leaves rising up at the neck. At the base a border of outlined lotus lappets, surmounted by a band of dots surrounded by single line borders under a band of solid lotus petals. The stepped foot tall and narrow, and the narrow base partially glazed.

H: 6 7/8 in. (17.5 cm.).

Qing: Qianlong period (1736 to 1795).

Provenance: Luen Chai Curios, Hong Kong - acquired in Hong Kong (September 1976 - \$140).



## C-015

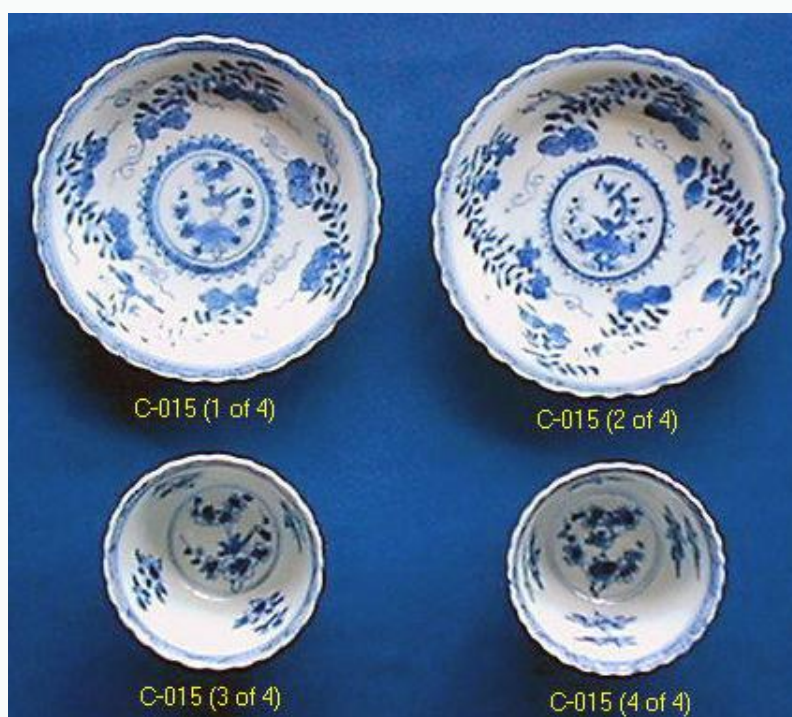
Blue and white tea bowls and saucer dishes (4 - 2 sets); four sprays of various flowers including camellias and daisies decorate the cavetto of the saucers, with a bird perched upon a flowering branch surrounded by petal lappets in the central medallion, a narrow band of cross-hatch diaper at the flat, foliated rim. The underside decorated with three sprawling floral sprays, and the flat base with an illegible shop mark within a double circle in underglaze blue. The tea bowls similarly decorated and marked en suite.

D (saucers): 5 in. (12.8 cm.) - No. 1; 5 1/8 in. (13.0 cm.) - No. 2.

H (bowls): 1 7/8 in. (4.7 cm.) - No. 1 and No. 2.

Qing: Kangxi period (1662 to 1722) - circa 1700.

Provenance: Christie's Auction (New York), 11 July 1980, lot 636 (July 1980 - \$110).



## C-016

Blue and white tea bowls and saucer dishes (4 - 2 sets); the saucers decorated with a long tailed phoenix standing on a flowering branch flanked by a rocky terrace below cranes and other birds in flight; the petal molded steep sides rising to a flattened, fluted rim with a narrow band of cross-hatch diaper at the scalloped edge. The underside painted with outlined lotus petal lappets, and the wide, flat base containing an illegible shop mark within a double circle in underglaze blue. The tea bowls similarly decorated and marked en suite, with one bowl without a shop mark.

D (saucers): 5 1/4 in. (13.3 cm.) - No. 1; 5 3/8 in. (13.6 cm.) - No. 2.

H (bowls): 2 in. (5.0 cm.) - No. 1; 2 1/8 in. (5.2 cm.) - No. 2.

Qing: Kangxi period (1662 to 1722) - circa 1700.

Provenance: Christie's Auction (New York), 11 July 1980, lot 635 (July 1980 - \$132).





## C-017

*Famille verte* saucers dishes (2 - pair); decorated on the exterior with four *famille verte* lobed panels of varying colored backgrounds - green, aubergine, cream-white, and yellow - reserved on a *cafe au lait* ground and separated by small floral sprays at the rim. The interior painted in underglaze blue with four floral sprays, including daisy and peony, surrounding the central medallion, which is decorated with a flowering branch enclosed within a double line border. The steep, rounded cavetto rising to a flattened rim with a narrow band of cross-hatch diaper at the plain edge. A bannered conch shell within a double circle in underglaze blue on the slightly convex base.

D: 5 in. (12.8 cm.) - No. 1; and 5 1/8 in. (12.9 cm.) - No. 2.

Qing: Kangxi period (1662 to 1722) - circa 1720.

Provenance: Christie's Auction (New York), 11 July 1980, lot 678 (July 1980 - \$165).

A very similarly decorated saucer, dated to the late 17th to early 18th century, is illustrated in Regina Krahl, *Chinese Ceramics in the Topkapi Saray Museum Istanbul, Volume III - Qing Dynasty Porcelain*, page 1266, Catalogue No. 3238.

**(REVISED - 21 June 2014)**



**C-018**

Vases (2 - pair) with gently rounded sides rising to a very short, constricted neck with rounded, everted mouth, and decorated in Ming style underglaze blue with scrolling lotus blossoms amid dense, spiky leaves. A band of pendant lotus panels framing tripartite dotted symbols reserved in white against a blue ground at the base; the shoulder surmounted by a band of stiff, upright plantain leaves; double line borders at the mouth and at the foot. An underglaze blue artemisia leaf on the base.

H: 5 7/8 in. (14.9 cm.) - No. 1;

H: 6 in. (15.2 cm.) - No. 2.

Later Qing: late 19th to early 20th century.

Provenance: acquired in London (October 1976 - \$100).

Compare with the large Wanli jar illustrated in S. T. Yeo and J. Martin, *Chinese Blue & White Ceramics*, Plate 96, No. 182.



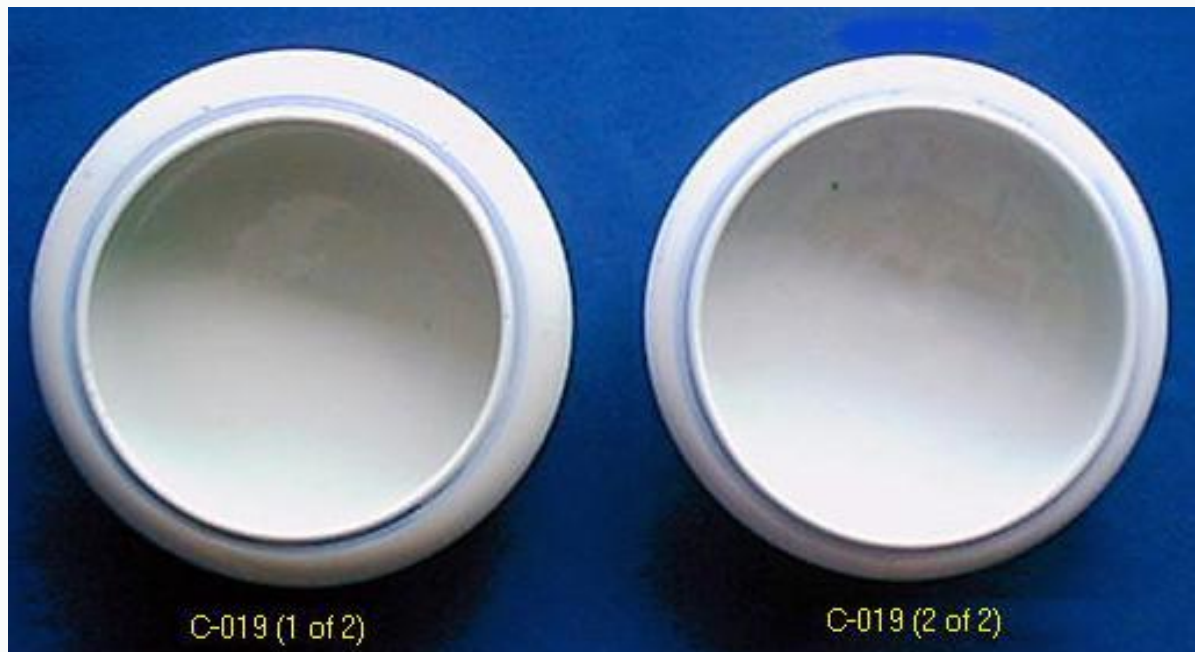
**C-019**

White glazed brush washers (2 - pair) with fully rounded sides, the sole decoration consisting of an underglaze blue double line border at the vertical mouthrim. A six character underglaze blue Kangxi mark on the very slightly convex wide base.

D: 4 5/8 in. (11.7 cm.) - No. 1 and No. 2.

Later Qing: late 19th to early 20th century.

Provenance: Lammert Brothers Auction (Hong Kong), 5 March 1976, lot 214 (March 1976 - \$24).



C-020

Polychrome conical bowls (2 - pair) painted with three phoenix medallions in soft shades of pink, yellow, green, blue and iron-red; a border of *ruyi* lappets, outlined in pink and filled with light turquoise, at the mouthrim. Above the foot a band of key-fret in pairs in a variant of the “squared - S” form, alternately painted in pink, yellow, iron-red, and blue on a light turquoise ground enclosed by a single line iron-red border, which is repeated at the footrim. The interior of the bowls undecorated and the potting thin. The interior side of the foot rather deep-set, with a six character iron-red Guangxu reign mark on the narrow glazed base.

D: 3 3/16 in. (9.7 cm.) - No. 1;

D: 3 7/8 in. (9.8 cm.) - No. 2.

Qing: Guangxu period (1875 to 1908).

Provenance: acquired in Hong Kong (April 1976 - \$11).



C-021

Polychrome bowl colorfully decorated on the steeply rounded sides with three stylized lotus sprays - painted aubergine, light blue, green, white and yellow - surmounted by leafy flowering branches and seedpods. Three tasseled canopies, with suspended lotus blossoms, similarly painted with iron-red and turquoise added, and containing small flowerheads hanging on wavy, streaming ribbons alternate with the lotus sprays. A double line underglaze blue border at the mouthrim and at the narrow foot, the base glazed. The interior undecorated except for a double line underglaze blue border at the mouthrim.

D: 5 1/8 in. (13.0 cm.).

Qing: Guangxu period (1875 to 1908).

Provenance: Sotheby's Auction (Hong Kong), 14 May 1976, lot 526 (May 1976 - \$101).



C-022

Doucai saucer dishes (2 - pair) the cavetto enameled with a pair of long-tailed phoenix in flight among scrolling lotus, a peony spray in the central medallion - all painted in soft green shades, pink, and iron-red - and all within pale underglaze blue outlines. An underglaze blue double line border encircles the central medallion and is repeated at the rim, which is lightly edged in gilt. Three small floral sprays decorate the underside, along with underglaze blue double line borders at the mouthrim and at the wide foot. The slightly convex base with an apocryphal four character underglaze blue Xuande mark.

D: 4 1/4 in. (10.8 cm.) - No. 1 and No. 2.

Qing: Jiaqing period (1796 to 1820).

Provenance: Luen Chai Curios, Hong Kong - acquired in Hong Kong (April 1976 - \$80).



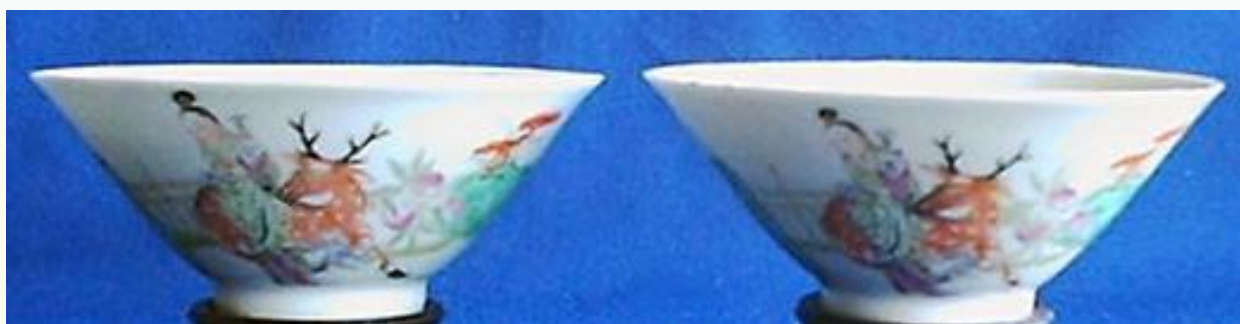
**C-023**

*Famille verte* bowls (2 - pair) of conical form solidly supported on a narrow and rather deep footrim. The sides decorated with a continuous scene of a sage being offered a lizard by a male attendant and flanked by a female attendant with a spotted deer. In the background a bamboo balustrade framed on one end by a bamboo tree growing from a rocky terrace, and on the opposite end a fruiting peach branch and *lingzhi* (sacred fungus) growing from a large rock - all painted in a palette of *famille verte* enamels of delicate tones. The interior undecorated, and on the slightly convex base a six character underglaze blue Daoguang reign mark within a double circle.

D: 4 in. (10.1 cm.) - No. 1 and No. 2.

Qing: Daoguang period (1821 to 1850).

Provenance: Lai Chung Ping, Tai Sing Co., Hong Kong - acquired in Hong Kong (April 1975 - \$160).



**C-023 (1 of 2)**

**C-023 (2 of 2)**

## C-024

Covered jar with slightly rounded sides, the lid more fully rounded with a cylindrical top, and decorated in underglaze blue; the sides with the figure of a warrior flanked by a fabulous beast erectly poised on a pedestal. The jar further embellished with an eleven character Chinese inscription. A priest surmounted by a fly-whisk and seated beside a small steep-roofed pavilion decorates the lid. The footrim is wide, with the base flat and glazed.

H: 4 7/8 in. (12.3 cm.).

Later Qing: late 19th to early 20th century.

Provenance: acquired in Hong Kong (May 1975 – received as a gift).

Donated: to a private collection in America.

A similarly shaped late 19th century jar is illustrated in S. T. Yeo and J. Martin, *Chinese Blue & White Ceramics*, Plate 62, No. 109.



**C-025**

Ovoid shaped blue and white vase with gently rounded sides and wide, slightly flared neck with lipped mouthrim, two small elephant head handles low on the neck above a slightly projecting horizontal ridge. The body decorated with four horses frolicking under a spreading willow tree, a rocky terrace with flowering branches at one side. A stylized cloud scroll reserved in white against a lightly shaded blue ground decorates the neck. The foot is slightly spread, and the base glazed.

H: 5 1/8 in. (12.9 cm.).

Later Qing: late 19th to early 20th century.

Provenance: acquired in Hong Kong (May 1975 – received as a gift).



**C-026**

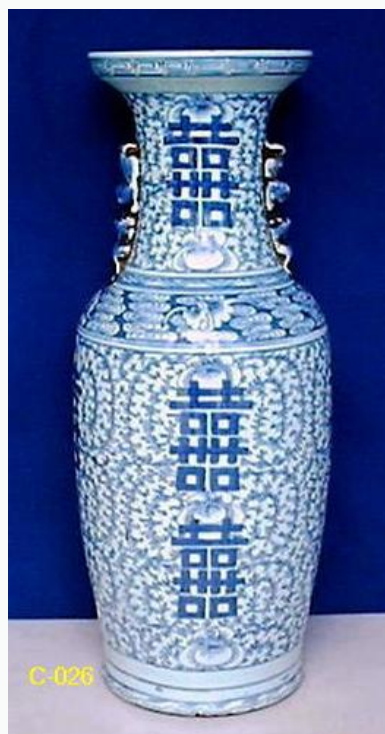
Large vase with nearly vertical sides, gently rounded shoulders, waisted neck with wide galleried rim and small vertical handles molded in the form of squat confronting beasts. Decorated in underglaze blue on the body and neck with elaborate scrolling peonies drawn in outline style, upon which are superimposed large *shuang-hsi* (double happiness) characters. A band of stylized cloud scrolls interspersed with bats - all reserved in white against a blue ground at the shoulder, a narrow band of chevron diaper immediately above. At the mouthrim a band of continuous key-fret. The footrim thick and heavily potted, the flat base glazed.

H: 23 3/4 in. (60.2 cm.).

Qing: late 19th century.

Provenance: acquired in Hong Kong (June 1975 - \$100).

Donated: to a private collection in America.



**C-027**

Globular shaped blue and white vase with tall cylindrical neck painted in a bright tone of underglaze blue with a floral scroll on the body, the three blossoms joined by a thin undulating stem supporting a thick growth of large, sharply pointed leaves. The base of the neck girded with a narrow band of cross-hatch diaper surmounted by upright overlapping petals, the neck undecorated except for a double line border just under the mouthrim. A clear white glaze covers this small vase, except for the carefully finished, beveled footrim exposing the smooth white biscuit. The slightly convex glazed base lightly pinholed.

H: 5 7/8 in. (14.9 cm.).

Qing: Kangxi period (1662 to 1722).

Provenance: Phillip's Auction (New York), 14 June 1984, lot 160 (June 1984 - \$60).



## C-028

Blue and white tea bowls and saucer dishes (12 - 6 sets); the saucers decorated in the central field with various flowering branches, including prunus, growing around a pierced ornamental rock; the cavetto lightly molded into eight petal-shaped sections and decorated with panels containing assorted floral sprays. The foliate mouthrim decorated with florettes in panels on a trellis border. Exterior is adorned with three sprawling floral sprays. On the rather broad glazed base with wedge-shaped footrim is an underglaze blue *yu* (jade) commendation mark within a double circle. The tea bowls complementarily decorated and similarly marked.

D (saucers): 5 1/4 in. (13.5 cm.) - No. 1 to No. 6;

H (bowls): 2 in. (5.2 cm.) - No. 7 to No. 12.

Qing: Kangxi period (1662 to 1722) - early 18th century.

Provenance: W. V. Halm Antiques, London - acquired in London (July 1986 - \$350).

A very similar saucer dish is illustrated in D. F. Lunsingh Scheurleer, *Chinese Export Porcelain*, plate 141. Compare also with C-001, which represents a slightly larger version of the saucers in this series.