

**S-001**

Small yingqing dish, the shallow rounded sides with six thin radiating raised ribs on the interior rising to the narrow flattened rim, the underside plain. Covered inside and out with a pale bluish glaze with attractive firing speckling overall. Large irregular crackle over the interior bottom, and some slight crackling at the foot. The foot thinly potted and roughly finished, with the narrow base unglazed.

D: 4 1/4 in. (10.9 cm.).

Song (960 to 1279): 12th century.

Provenance: Sotheby's Auction (New York), 24 June 1981, lot 188;

Spink & Son, Ltd., London (original Spink's sticker affixed) –

(June 1981 - \$297).

Compare with the small dish illustrated by G. Lee, *Selected Far Eastern Art in the Yale University Art Gallery*, No. 213.



S-002

Yingqing bowl of thinly potted conical form, the widely flaring sides of the interior incised with radiating waves of flower-like shape with the details combed. Covered with a pale blue translucent glaze containing some crackling, and pooling to a deeper tone in the small, slightly raised central medallion and around the foot. The shallow foot and the flat narrow base unglazed and burnt to pale russet in the firing.

D: 6 3/4 in. (17.0 cm.).

Northern Song: 960 to 1127.

Provenance: Sotheby's Auction (New York), 24 June 1981, lot 188 A (June 1981 - \$1,010).

Clearly identifiable as pertaining to type "Cp3" as defined by Wirgin, and may be compared with the design on the bowl illustrated by J. Wirgin, *Song Ceramic Designs*, plate 12: d.



**S-003**

Carved yingqing bowl with gently rounded sides and straight rim, the exterior carved with slender upright lotus petals extending up the sides from the small foot, the interior undecorated. Covered inside and out with a pale bluish turquoise glaze, which tends to accumulate in a “tear drop” effect at the interior and exterior mouthrim. The flat unglazed base clearly revealing a body of sugary texture.

**D: 6 1/2 in. (16.4 cm.).**

**Song: 960 to 1279.**

**Provenance: Sotheby's Auction (New York), 18 September 1981, lot 346 (September 1981 - \$595).**



**S-004**

Carved yingqing bowl decorated with two boys among peonies on the delicately potted, flared and slightly rounded sides. The crisply executed design, which extends to the central medallion, accented with combed details beneath a lustrous, translucent and crackled greenish-blue glaze pooling to turquoise where deeply carved. The exterior plain, with a small tapered foot, and the shallow beveled footrim slightly outward sloping from the unglazed flat base, which contains traces of adherent sand and black residue from the firing support.

D: 7 7/8 in. (19.9 cm.).

Song (960 to 1279): 12th century.

Provenance: Sotheby's Auction (New York), 8 December 1983, lot 242 (December 1983 - \$298).

A very similar bowl is illustrated by J. Wirgin, *Song Ceramic Designs*, figure 17:d (line drawing) and plate 20:b (photograph); for the illustration of another similar bowl refer to B. Gyllensvard, *Recent Finds of Chinese Ceramics at Fostat. I*, figure 69 (line drawing) and plates 22-2 and 3 (photograph).

**S-005**

Junyao dish with shallow rounded sides and flattened rim covered with an attractive pale lavender-blue mottled glaze thinning to a mushroom color at the rim, and pooling just short of the foot to reveal the dark compact ware. The small slightly convex base partially glazed, with the unglazed neatly finished foot of squared section and lightly covered with a thin coating of lustrous iron wash.

D: 4 1/2 in. (11.4 cm.).

Song: 960 to 1279 - Junyao kilns.

Provenance: Sotheby's Auction (New York), 12 June 1984, lot 220 (June 1984 - \$935).

Refer to the following for the illustration of similar dishes: Malcolm MacDonald Collection, *Catalogue*, plate XXII, No. 68; Christie Manson & Woods (New York), *Catalogue of Important Chinese and Japanese Works of Art*, December 2, 1982, lot 434; and Sotheby Parke Bernet (London), *Catalogue of the Edward T. Chow Collection (Part Two): Early Chinese Ceramics and Ancient Bronzes*, December 16, 1980, lot 226.



**S-006**

Celadon oil jarlet with globular body surmounted by a short neck with lipped rim, covered with an evenly shaded olive glaze with an all over network of crazing. The narrow concave base and bottom edge of the body unglazed, revealing the buff colored biscuit.

H: 3 in. (7.7 cm.); D: 2 7/8 in. (7.4 cm.).

Southern Song: 1128 to 1279.

Provenance: acquired in New York (June 1984 - \$115).

Similar celadon jarlets are illustrated in the following: the Vancouver Society for Asian Art, *The Talking Jars*, No. C 25; Southeast Asian Ceramics Society, *Chinese Celadons*, plate 89, No. 108; Columbus Museum of Art, *Shadow of the Dragon - Exhibition Catalogue*, No. 28; W. Sorsby, *South-east Asian and Early Chinese Export Ceramics*, No. 33; and Sotheby Parke Bernet (Los Angeles), *Catalogue of Fine Oriental Works of Art*, October 23, 1980, lot 1857.



**S-007**

Small yingqing jarlet of squat ovoid form with a short neck and upright rim. An attractive pale blue glaze covers the interior and exterior, ending at the slightly convex sugary textured unglazed base without footrim.

H: 2 1/8 in. (5.4 cm.).

Song: 960 to 1279.

Provenance: acquired in New York (June 1984 - \$120).



**S-008**

**Cizhou polychrome figure of a reclining boy modeled resting on his right arm with legs casually crossed. The tranquil expressed figure wearing a tightly wrapped robe with open collar and decorated in red-outlined cash accented in green - with further touches of yellow and black enamels all on a crackled ivory ground**

**L: 6 1/2 in. (16.5 cm.).**

**Song: 960 to 1279 - Cizhou kilns.**

**Provenance: Christie's Auction (New York), 29 June 1984, lot 494;  
Georges deBatz Collection (original deBatz collection sticker affixed);  
C. T. Loo, Paris (June 1984 - \$77).**





S-009

Yingqing molded dishes (2 - pair) with flaring sides and slightly domed center decorated with two fish separated by lotus blossoms and swimming parallel to each other towards the right of the dish around a lotus leaf. Around the sides three tiers of overlapping petal points below a key-fret border, with an unglazed band around the mouthrim revealing the pocelaneous body burnt buff during the firing. An attractive clear blue glaze of even tone covering the interior and the plain underside with slightly concave base.

D: 4 3/16 in. (10.6 cm.) - No. 1 and No. 2.

Southern Song: 1128 to 1279.

Provenance: Sotheby's Auction (New York), 17 October 1984, lot 98; Fogg Museum of Art (F. M. A.), accessioned - 1930, deaccessioned - 1984 (original Fogg sticker affixed) - (October 1984 - \$150).

A similarly decorated dish is illustrated in Christie Manson & Woods (New York), *Catalogue of Chinese Ceramics, Jades and Works of Art*, November 30, 1983, lot 67; and another described in Christie Manson & Woods (New York), *Catalogue of Important Chinese Works of Art*, November 6, 1980, lot 30.



**S-010**

Yingqing dish molded in shallow relief with two fish, among lotus blossoms and leaves, swimming parallel to each other towards the left of the slightly domed center and surrounded by a depressed circular border. A band of key-fret with four tiers of overlapping petal points below decorates the flared sides, more generously proportioned than those of S-009 to which this dish may be compared. Covered with a light blue glaze extending to the slightly convex base, with an unglazed band at the mouthrim displaying the buff colored biscuit.

D: 4 5/16 in. (10.9 cm.).

Southern Song: 1128 to 1279.

Provenance: Sotheby's Auction (New York), 17 October 1984, lot 98; Fogg Museum of Art (F. M. A.), accessioned - 1930, deaccessioned - 1984 (original Fogg sticker affixed) - (October 1984 - \$75).

For illustrations of similar dishes refer to: Peter Y. K. Lam, "Jingdezhen Wares of the Yuan Dynasty", *Oriental Art*, Volume 15, Number 6, June 1984, figure 9; and the Oriental Ceramic Society of Hong Kong, *Jingdezhen Wares - the Yuan Evolution*, No. 14.

**S-011**

Yingqing dish with the glaze a delicate shade of blue and decorated on the slightly domed center with lightly molded daisy sprays enclosed within a raised circular ridge. The gently rounded sides adorned with three tiers of overlapping petal points meticulously veined with vertical lines, and the unglazed band at the mouthrim displaying the extremely white, sugary textured body. A circular border carved around the glazed convex base provides a vestigial footrim.

D: 4 1/8 in. (10.5 cm.).

Southern Song: 1128 to 1279.

Provenance: Sotheby's Auction (New York), 17 October 1984, lot 98; Fogg Museum of Art (F. M. A.), accessioned - 1930, deaccessioned - 1984 (original Fogg sticker affixed) - (October 1984 - \$75).



**S-012**

Yingqing gourd shaped box and cover with vertical sides molded into twelve segments with a small stem in the depressed center of the cover. Covered with a pale blue translucent glaze pooling to turquoise between the molded segments and stopping unevenly just above the base, the interior also glazed. Five molded Chinese characters in a vertical line, including the characters *hezi* (box), on the flat unglazed base with slight footrim.

D: 2 3/4 in. (7.0 cm.).

Southern Song: 1128 to 1279.

Provenance: Sotheby's Auction (New York), 17 October 1984, lot 98; Fogg Museum of Art (F. M. A.), accessioned - 1930, deaccessioned - 1984 (original Fogg sticker affixed) - (October 1984 - \$113).

Similar boxes are illustrated in the following: the Oriental Ceramic Society of Hong Kong, *Jingdezhen Wares - the Yuan Evolution*, No. 20; Sotheby Parke Bernet (Hong Kong), *Catalogue of Important Chinese Ceramics*, May 21, 1984, lot 17 (1 of 2); Sotheby Parke Bernet (London), *Catalogue of the Edward T. Chow Collection (Part Two): Early Chinese Ceramics and Ancient Bronzes*, December 16, 1980, lot 286; and Sotheby Parke Bernet (New York), *Catalogue of Fine Chinese Works of Art*, May 11, 1978, lot 145.

**S-013**

Small yingqing dishes (2 - pair) with shallow flaring sides, freely carved with an abstract floral spray on the convex center. The translucent glaze of pale aquamarine tone covering the concave base, with the mouthrim of the delicately potted dishes unglazed.

D: 3 5/8 in. (9.3 cm.) - No. 1 and No. 2.

Southern Song: 1128 to 1279.

Provenance: Sotheby's Auction (New York), 17 October 1984, lot 98; Fogg Museum of Art (F. M. A.), accessioned - 1930, deaccessioned - 1984 (original Fogg sticker affixed) - (October 1984 - \$150).

For the illustration of similarly decorated dishes refer to Sotheby Parke Bernet (New York), *Catalogue of Fine Chinese Ceramics and Works of Art*, December 4, 1981, lot 270; and Sotheby Parke Bernet (Hong Kong), *Catalogue of Chinese Ceramics, Works of Art, Jades, Textiles and Reference Books*, November 26, 1981, lot 522.

The size, shape and construction of these small dishes suggest they may have originally been intended for use on a scholar's desk as brush washers.

## S-014

Yingqing dishes (2 - pair) decorated on the domed center with a fluidly carved abstract floral spray, which may be compared to S-013. The bucket-shaped, rather steep sides extending to an unglazed mouthrim. An aquamarine glaze covers the interior and the exterior including the concave base.

D: 4 1/8 in. (10.5 cm.) - No. 1 and No. 2.

Southern Song: 1128 to 1279.

Provenance: Sotheby's Auction (New York), 17 October 1984, lot 98; Fogg Museum of Art (F. M. A.), accessioned - 1930, deaccessioned - 1984 (original Fogg sticker affixed) - (October 1984 - \$150).

For the illustration of similarly decorated dishes refer to Sotheby Parke Bernet (New York), *Catalogue of Fine Chinese Ceramics and Works of Art*, December 4, 1981, lot 270; and Sotheby Parke Bernet (Hong Kong), *Catalogue of Chinese Ceramics, Works of Art, Jades, Textiles and Reference Books*, November 26, 1981, lot 522.



S-014 (1 of 2)

S-014 (1 of 2 - Base)

**S-015**

Jizhou iron-splashed tea bowl with thickened mouthrim, the dark brown glaze mottled with splashes of amber and blue-gray resulting in a distinctive and appealing effect. The glaze ends unevenly above the base of the conical body exposing the buff-colored biscuit and vestigial footrim.

D: 4 1/2 in. (11.5 cm.).

Southern Song: 1128 to 1279 - Jizhou kilns.

Provenance: Christie's Auction (New York), 5 February 1986, lot 11 (February 1986 - \$990).

Similar bowls are illustrated in the following: The National Palace Museum, "Monthly of Chinese Art", Vol. 3, No. 11 (Publication No. 35), February 1986, page 48, illustration 1; M. Tregar, *Song Ceramics*, plates 266 and 269; *Oriental Ceramics, The World's Great Collections*, Vol. 1, Tokyo National Museum, No. 92; Christie Manson & Woods (New York), *Catalogue of Fine Chinese Ceramics and Works of Art*, December 2, 1985, lot 192; and Sotheby Parke Bernet (Hong Kong), *Catalogue of Chinese Ceramics, Works of Art and Jades*, November 16, 1983, lot 436.



**S-016**

Longquan celadon oil jarlet, the globular body impressed with a sinuous four clawed molded dragon chasing a flaming pearl and surmounted by a short neck with lipped rim. A band of wave sprays at the base. The jarlet is covered with an evenly shaded green glaze, with the join where the two horizontal sections of the jarlet are luted together faintly visible. The narrow concave base without footrim and outside edge of the body unglazed, revealing the pale gray colored biscuit, with a red-orange line where the glaze stops unevenly above the base.

H: 2 1/2 in. (6.5 cm.); D: 3 in. (7.8 cm.).

Southern Song: 1128 to 1279 - Longquan kilns.

Provenance: acquired in London (July 1986 - \$87).

Similar celadon jarlets are illustrated in the following: Southeast Asian Ceramics Society, *Chinese Celadons*, plate 90, Nos. 111 and 113, and plate 92, No. 115; Columbus Museum of Art, *Shadow of the Dragon - Exhibition Catalogue*, No. 30; and Sotheby Parke Bernet (New York), *Catalogue of South-East Asian and Early Chinese Export Ceramics*, October 4, 1974, lot 64.



**S-017**

Small undecorated Longquan celadon oil jarlet with gently rounded angular body and a short upright neck with lipped rim. The glaze a very light green tone with a fine crackle throughout and covering the entire jarlet, except for the small markedly concave brick-red colored base without footrim. The join where the two horizontal sections of the delicately potted jarlet are luted together clearly visible in the lightly glazed interior.

H: 1 7/8 in. (4.7 cm.); D: 2 1/2 in. (6.3 cm.).

Song: 960 to 1279 - Longquan kilns.

Provenance: acquired in London (July 1986 - \$63).

Similar celadon jarlets are illustrated in the following: Southeast Asian Ceramics Society, *Chinese Celadons*, plate 88, No. 107; U. Wiesner, *Chinesische Keramik Auf Den Philippinen*, No. 65 and No. 67; and K. Aga-Oglu, *The Williams Collection of Far Eastern Ceramics*, No. 46.



**S-018**

Longquan celadon oil jarlet undecorated, and with gently rounded angular body and a short upright neck. The light blue-green colored glaze poling to a deeper hue at the juncture of the shoulders and neck, and ending in uneven dark orange line where it stops above the small concave light gray colored base without footrim.

H: 2 1/8 in. (5.5 cm.); D: 2 3/8 in. (6.6 cm.).

Southern Song: 1128 to 1279 - Longquan kilns.

Provenance: Phillip's Auction (London), 30 July 1986, lot 143  
(July 1986 - \$67).

Similar celadon jarlets are illustrated in the following: Southeast Asian Ceramics Society, *Chinese Celadons*, plate 89, No. 110; and U. Wiesner, *Chinesische Keramik Auf Den Philippinen*, No. 63.

**S-019**

Yingqing circular box, the top of the cover molded with small stylized flowerheads covered in an attractive blue glaze pooling deeply around the florettes, and continuing carelessly to the sides of the cover and the sides of the lower section. The interior of the bottom section of the box carefully glazed, with the unglazed flat base slightly countersunk and tinged with iron brown spots set against a sugary textured biscuit, which appears to be lightly covered with a thin iron wash.

D: 3 in. (7.7 cm.).

Song: 960 to 1279.

Provenance: Christie's Auction (New York), 1 December 1986, lot 27 (December 1986 - \$220).

Refer to M. Tregar, *Song Ceramics*, plate 289 for the illustration of a similar circular box and cover.



**S-020**

Yingqing cosmetic box containing three small cups with steep flaring sides and dimpled convex centers applied to the glazed interior. The gently domed cover accented by a recessed groove encircling the edge of the rim, with concentric ridges from the potter's wheel clearly visible under the translucent pale blue glaze. The unglazed interior of the cover exhibits to full advantage the sugary textured fine white biscuit sprinkled with tiny brown iron spots. An unglazed flange surmounts the vertical extension of the sharply angled sides of the base of the box, which are raised on a vertical foot. The partially glazed footrim and base further reveal the sugary textured biscuit, and the base also contains darkened scars from the firing pads.

D: 4 1/4 in. (10.8 cm.).

Song (960 to 1279): 12th century.

Provenance: Christie's Auction (New York), 1 December 1986, lot 28 (December 1986 - \$440).

A very similar yingqing cosmetic box base with a dated inscription corresponding to the *xin you* year (1141 A. D. or 1201 A. D) is illustrated in Sotheby Parke Bernet (New York), *Catalogue of Fine Chinese Ceramics, Works of Art and Paintings*, December 7, 1983, lot 233.

S-021

Miniature white ware baluster-shaped vase with cylindrical neck and delicately flaring mouthrim. The lustrous white glaze pools slightly at the carefully articulated ridge at the base of the neck and extends evenly over the generously rounded shoulders, ending irregularly at the unglazed concave base without footrim. The unglazed interior and base reveal the extremely fine grained, sugary textured, white body of this very delicately potted small vase.

H: 2 1/2 in. (6.4 cm.).

Song: 960 to 1279.

Provenance: acquired in Hong Kong (September 1987 - \$55).



**S-022**

Miniature white ware *kuan*-shaped vases (2 - pair) with rather wide, somewhat angular shoulders and short vertical neck. The glaze ends irregularly at the flat unglazed base without footrim with extremely compact and smooth sugary-white body. The unglazed interior reveals a luting ridge extending across the upper third of these solidly potted miniatures.

H: 2 1/4 in. (5.5 cm.) - No. 1 and No. 2.

Song: 960 to 1279.

Provenance: acquired in Hong Kong (September 1987 - \$110).



**S-023**

White ware bowl, the rather steeply rounded sides lightly molded into six petal-like segments separated by vertical ribbing on the interior, and with corresponding carved depressions on the underside. The glaze pooling to a subtle light blue tone where accumulated at the upright mouthrim, along the ribbings/depressions, and above the roughly finished foot. An exceptionally well levigated fine white body is exposed at the narrow, flat unglazed base with shallow footrim, and even more so where the glaze ends irregularly on the underside above the foot.

D: 4 in. (10.2 cm.).

Song: 960 to 1279.

Provenance: Tai Wo Antiques, Hong Kong - acquired in Hong Kong (September 1987 - \$167).



## S-024

Yingqing cup and matching stand (2 - set) both with foliate rim in the shape of a six petaled open flower. A pale blue yingqing glaze covers this delicately potted set, ending irregularly on the underside of the steeply flaring cup, to expose a sugary textured biscuit, and on the tiny flat base with darkened scars from the firing supports. A hemispherical shaped receptacle, for the accompanying cup, surmounts the stand with nearly horizontal sides and on the underside a molded ridge with corresponding grooves to represent the flower's petals.

D: 3 in. (7.6 cm.) - cup;

D: 2 7/8 in. (7.3 cm.) - stand.

Song: 960 to 1279.

Provenance: acquired in Hong Kong (September 1987 - \$153).

This yingqing cup and matching stand set is rather unusual, and research to date has not yet revealed any recorded references to similar examples.





**S-025**

Small yingqing cosmetic jarlets (2 - pair) with slightly domed flange edged cover surmounted by a tubular knob. The sides of the jarlets nearly vertical and tapering to a small flat base with the barest hint of a footrim. A light blue mottled glaze with variegated crackle covers the jarlets, except for the sugary textured base, the mouthrim, and the flange of the cover - with the edges of the unglazed areas tinged a bright apricot.

H (including cover): 2 in. (5.0 cm.) - No. 1 and No. 2;

D: 2 1/16 in. (5.2 cm.) - No. 1 and No. 2.

Song: 960 to 1279.

Provenance: acquired in Hong Kong (September 1987 - \$129).



**S-026**

Molded yingqing dish, the shallow rounded sides molded on the interior with a floral scroll consisting of five different blossoms - including chrysanthemum, peony, lotus and camellia - with a band of keyfret above and a floral spray at the center. The unglazed mouthrim showing the ware burnt orange in the firing, and the partially glazed vertical footrim and convex base heavily covered with a dull brown iron wash.

D: 6 5/8 in. (16.8 cm.).

Song: 960 to 1279.

Provenance: Tai Wo Antiques, Hong Kong - acquired in Hong Kong (September 1987 - \$253).



**S-027**

**Carved yingqing bowl with steeply rounded sides and upright unglazed mouthrim, the exterior carved with rather deep vertical and oblique grooves representing an abstract band of upright lotus petals extending up the sides from the foot. Covered inside and out with a pale blue vitreous glaze, which tends to accumulate at the apricot tinged rim of the undecorated interior. The unglazed flat base and interior of the knife-trimmed footrim revealing an apricot hued body of sugary texture.**

**D: 5 7/8 in. (14.8 cm.).**

**Song: 960 to 1279.**

**Provenance: Tai Wo Antiques, Hong Kong - acquired in Hong Kong (September 1987 - \$167).**



S-028

Yingqing dish glazed in an attractive sky blue tone, darker hue where accumulated at the lightly molded border enclosing the center of this undecorated dish with rather deep flaring sides. Applied rather hastily to the wide flat base with vestigial footrim, the glaze ends below the mouthrim exposing the sugary textured body.

D: 4 5/16 in. (10.9 cm.).

Song: 960 to 1279.

Provenance: Tai Wo Antiques, Hong Kong - acquired in Hong Kong (September 1987 - \$112).

May be compared with S-029, a slightly larger and bit more heavily potted version from this same series.



S-029

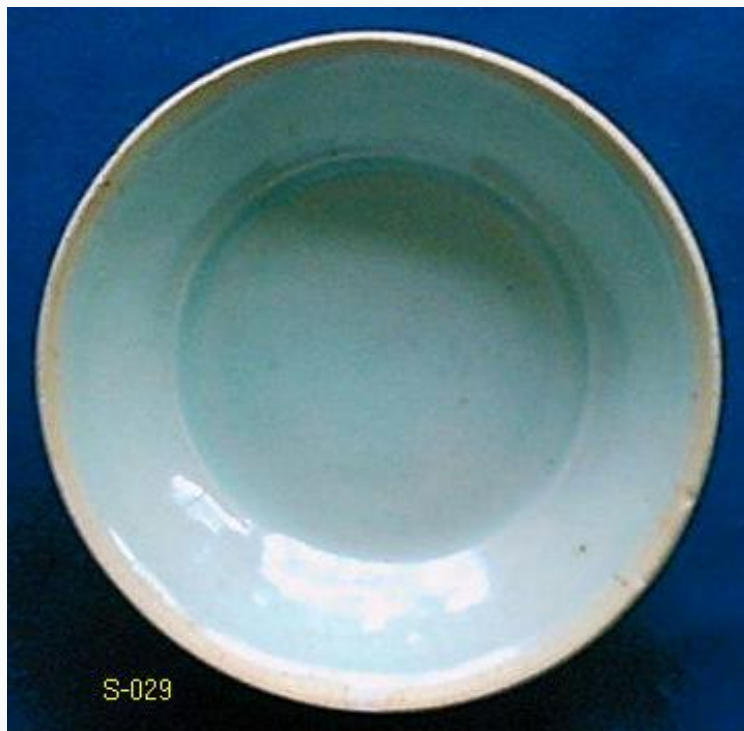
Yingqing dish glazed in an attractive sky blue tone, darker hue where accumulated at the lightly molded border enclosing the center of this undecorated dish with rather deep flaring sides. Applied rather hastily to the wide flat base with vestigial footrim, the glaze ends below the mouthrim exposing the sugary textured body.

D: 4 7/8 in. (12.3 cm.).

Song: 960 to 1279.

Provenance: Tai Wo Antiques, Hong Kong - acquired in Hong Kong (September 1987 - \$167).

May be compared with S-028, a slightly smaller and bit more lightly potted version from this same series.



S-030

Small yingqing *lianci* (lotus bud) shaped bowl, a very lightly molded floral spray in the center, and the steep sides rising to an unglazed russet tinged rim. The creamy blue glaze extends to the narrow foot, with the interior of the vertical footrim and small flat base unglazed, exposing the sugary textured ware.

D: 3 7/8 in. (9.7 cm.).

Song: 960 to 1279.

Provenance: Tai Wo Antiques, Hong Kong - acquired in Hong Kong (September 1987 - \$167).

A similar bowl is illustrated in Christie Manson & Woods (New York), *Catalogue of Important Chinese Ceramics and Works of Art*, November 29, 1984, lot 140.



**S-031**

Yingqing circular box with ribbed sides, the top of the cover clearly molded with a stylized floral spray covered in a pale blue glaze pooling lightly around the thin thread relief floral design. The glaze extends to the sides of the cover and the sides of the lower section, ending unevenly at the bottom of each. The interior of the lower section of the box is carefully glazed, the inside of the cover only partially glazed. During potting incised vertical notches were added to act as “guides’ to facilitate correct alignment of the cover with the lower section. The unglazed flat base is slightly countersunk and speckled with iron brown spots set against a sugary textured biscuit.

D: 3 in. (7.6 cm.).

Southern Song: 1128 to 1279.

Provenance: acquired in Hong Kong (June 1988 - \$260).

For the illustrations of similar circular boxes and covers refer to S. Hayashiya and H. Trubner, *Chinese Ceramics from Japanese Collections*, No. 13 (B) L; and to J. Wirgin, *Song Ceramic Designs*, plate 32: a, b and c (clearly identifiable as pertaining to type “Cp 41” as defined by Wirgin).

**S-032**

Molded yingqing octagonal box and cover adorned with a clearly impressed lotus spray, the sky- blue glaze pooling to a darker hue in the recessed areas. The glaze extends down the ribbed sides, halting unevenly at the bottom of the cover and at the base of the lower section. On the interior, the lower section is almost completely glazed, and the cover only partially glazed on the bottom with the remaining portions unglazed. The fine textured, compact white biscuit clearly revealed at the unglazed flat base, which is slightly countersunk.

D: 2 1/2 in. (6.3 cm.).

Southern Song: 1128 to 1279.

Provenance: acquired in Hong Kong (June 1988 - \$212).

Comparable boxes are illustrated are in the following: J. Wirgin, *Song Ceramic Designs*, plate 31: a (box with similar shape) and plate 31: c (box with similar motif); and Sotheby Parke Bernet (New York), *Catalogue of Fine Chinese Ceramics, Works of Art and Paintings*, November 6, 1981, lot 210.





**S-033**

Yingqing circular box, the entire cover molded in the shape of a blooming chrysanthemum and covered in an attractive sky-blue glaze pooling deeply around the petals. The glaze continues unevenly down the sides of the cover and the sides of the lower section. The interior of the bottom section of the box is heavily glazed; the inside of the cover glazed unevenly. To facilitate correct alignment of the cover with the base incised diagonal notches were added during potting to act as “guides”. The unglazed flat base is slightly countersunk, and the sugary textured biscuit appears to be very lightly covered with a thin iron wash, which extends up to the unglazed portions of the unevenly glazed sides.

D: 2 11/16 in. (6.8 cm.).

Song: 960 to 1279.

Provenance: acquired in Hong Kong (June 1988 - \$212).



**S-034**

Junyao dish well potted and with shallow rounded sides and upright mouthrim, covered with an attractive pale lavender-blue glaze with various areas of mottled floescence and typical earthworm markings. The glaze thins to a mushroom color at the mouthrim, and pools just short of the foot to reveal the dark compact ware. The slightly convex narrow base is irregularly glazed, with the unglazed carefully finished foot beveled on the interior side with vestiges of the lightly applied thin iron coating remaining.

D: 8 in. (20.4 cm.).

Song: 960 to 1279 - Junyao kilns.

Provenance: acquired in Hong Kong (December 1989 - \$650).

Refer to the following for illustrations of similar dishes: National Palace Museum, Taipei, Taiwan, *Special Exhibition of Song Dynasty Porcelain*, No. 62; J. Moorhouse, *Collecting Oriental Antiques*, No. 28 (left); Christie, Manson & Woods (New York) *Catalogue of Fine Chinese Ceramics and Works of Art*, December 10, 1987, lot 200; and Sotheby Parke Bernet (Hong Kong) *Catalogue of Important Chinese Ceramics and Works of Art*, November 28, 1978, lot 26.

**S-035**

Yingqing bowl with steep sides - flaring slightly at the upright rim - molded with six panels of twin lotus blossoms emerging from a clump of rushes flanked by broad-leafed sprays and surmounted by a band of key-fret. The central medallion decorated en suite with the side panels, the mouthrim unglazed and the exterior plain. The tiny button-like irregularly shaped foot and nipped base unglazed and speckled randomly with spots of orange. An attractive intense blue glaze covers the sugary textured biscuit of this stoutly potted piece.

D: 5 7/8 in. (15.0 cm.).

Song: 960 to 1279.

Provenance: acquired in Hong Kong (December 1989 - \$128).



**S-036**

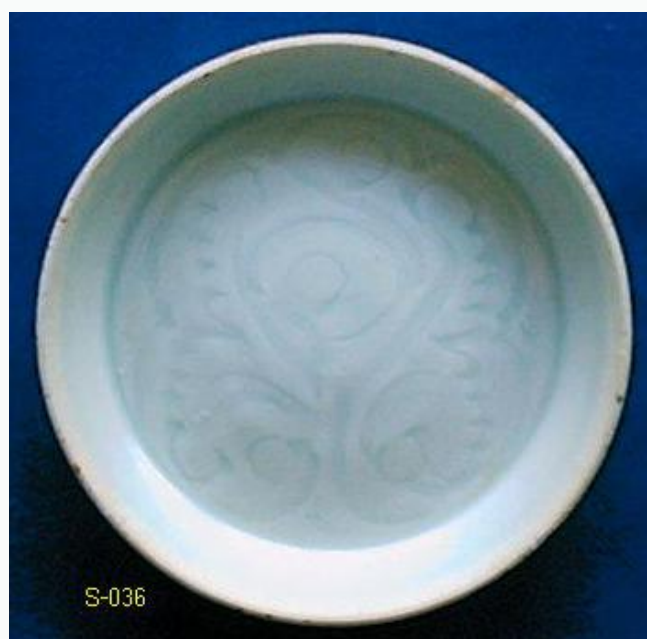
Yingqing dish decorated on the domed center with a fluidly carved abstract floral spray, which may be compared to S-013 and S-014. The bucket-shaped, rather step sides extending to an unglazed rim. An aquamarine glaze covers the interior and the exterior including the concave base.

D: 4 3/8 in. (11.1 cm.).

Song: 960 to 1279.

Provenance: acquired in Hong Kong (December 1989 - \$50).

For the illustration of similarly decorated dishes refer to Sotheby Parke Bernet (New York), *Catalogue of Fine Chinese Ceramics and Works of Art*, December 4, 1981, lot 270; and Sotheby Parke Bernet (Hong Kong), *Catalogue of Chinese Ceramics, Works of Art, Jades, Textiles and Reference Books*, November 26, 1981, lot 522.



### S-037

Yingqing molded dishes (2 - pair) with gently rounded flaring sides and slightly domed center, decorated with two fish surrounded by lotus blossoms and aquatic plants, and swimming parallel to each other towards the left of the dish. Around the sides a band of floral scroll consisting of four lotus blossoms separated by other flowers below a key-fret border, with an unglazed band around the mouthrim revealing the pocelaneous body burnt buff in the firing. An attractive clear blue glaze of even lustrous tone covers the interior and the plain underside with slightly concave base.

D: 5 1/2 in. (14.0 cm.) - No. 1 and No. 2.

Southern Song: 1128 to 1279.

Provenance: acquired in Hong Kong (July 1991 - \$450).

Very similarly designed dishes are presented in S-009 and S-010, and also in Christie's (New York), *Catalogue of Fine Chinese Ceramics, Jades and Works of Art*, June 4, 1987, lot 227; and Sotheby's (Hong Kong), *Catalogue of Fine Chinese Ceramics Jades and Works of Art*, May 11, 1983, lot 45. A similarly decorated dish is also illustrated in Christie, Mason and Woods (New York), *Catalogue of Chinese Ceramics, Jades and Works of Art*, November 30, 1983, lot 67; and another described in Christie, Manson and Woods (New York), *Catalogue of Important Chinese Works of Art*, November 6, 1980, lot 30.

**S-038**

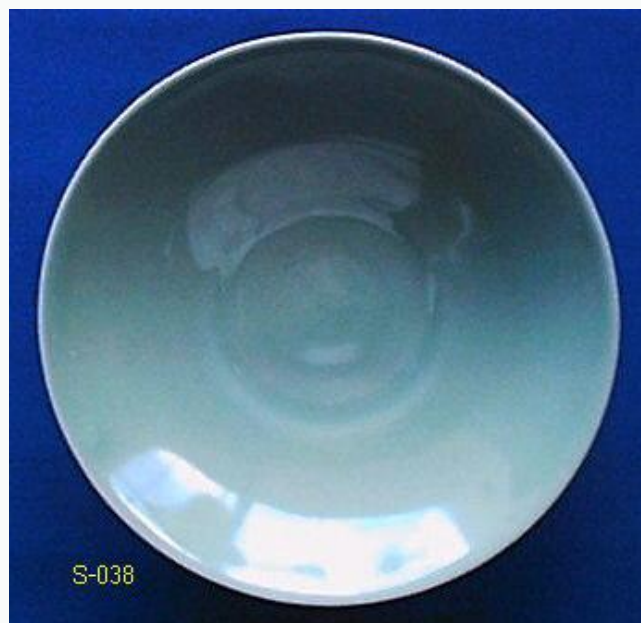
Longquan celadon dish with gently flaring sides, the sea-green glaze exceptionally soft and smooth with a pleasing unctuous quality. The interior is plain, except for a lightly etched border around the center, and the underside with carved overlapping lotus petals. The slightly nipped base carefully glazed, and the footrim inward sloping on both the exterior and interior, with the unglazed edge oxidized a light brick-red.

D: 6 3/8 in. (16.2 cm).

Southern Song: 1128 to 1279 - Longquan kilns.

Provenance: Castle of Antiquities, Hong Kong - acquired in Hong Kong (August 1991 - \$1,158).

Similar dishes are illustrated in J. Ayers, et al., *Iron in the Fire*, No. 41; and B. J. Stein, *Longquan Celadons*, No. 3.



**S-039**

Longquan celadon lotus bowl with steeply rounded conical sides, the light bluish-green glaze exceptionally soft and smooth with a pleasant unctuous quality. The interior is plain, except for a lightly etched border around the center bottom, the underside with precisely carved overlapping lotus petals. The slightly nipped base carefully glazed and the footrim inward sloping on both the exterior and interior, with the unglazed edge oxidized a light russet.

D: 6 1/8 in. (15.6 cm.).

Southern Song: 1128 to 1279 - Longquan kilns.

Provenance: Castle of Antiquities, Hong Kong - acquired in Hong Kong (August 1991 - \$1,822).

Similar bowls are illustrated in C. Brown, *Chinese Ceramics - The Wong Collection*, No. 15; Christie's Swire (Hong Kong), *Catalogue of Important Chinese Ceramics, Jades and Works of Art*, October 1, 1991, lot 724; Christie's (New York), *Catalogue of Fine Chinese Ceramics, Jades and Works of Art*, June 4, 1987, lot 220.



**S-040**

Yingqing dish decorated on the domed center with a fluidly carved abstract floral spray, which may be compared to S-013, S-014, and S-036. The bucket-shaped, rather steep sides extending to an unglazed mouthrim. A light aquamarine glaze covers the interior and the exterior including the concave base.

D: 4 1/16 in. (10.3 cm.).

Song: 960 to 1279.

Provenance: acquired in Hong Kong (August 1991 - \$90).

For the illustration of similarly decorated dishes refer to Sotheby Parke Bernet (New York), *Catalogue of Fine Chinese Ceramics and Works of Art*, December 4, 1981, lot 270; and Sotheby Parke Bernet (Hong Kong), *Catalogue of Chinese Ceramics, Works of Art, Jades, Textiles and Reference Books*, November 26, 1981, lot 522.





**S-041**

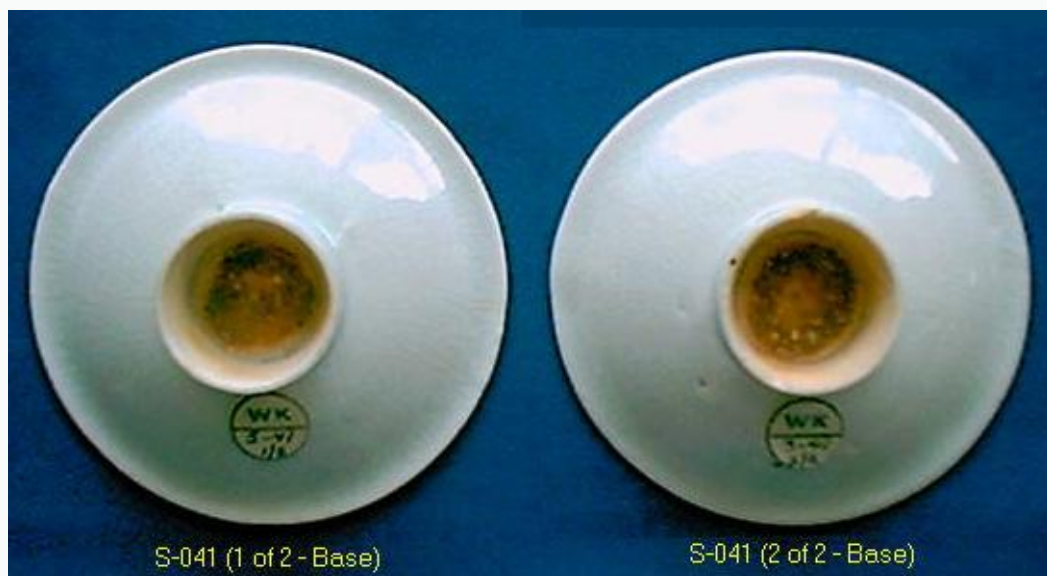
Small yingqing dishes (2 - pair) of finely potted shallow form with down turned rim, supported on a tall cylindrical foot and covered in a pale bluish-green translucent glaze with a fine network of crackle overall. The interior of the high foot unglazed and the flat, narrow base prominently darkened with a firing scar from the kiln support.

D: 4 1/8 in. (10.5 cm.) - No. 1 and No. 2.

Song: 960 to 1279.

Provenance: acquired in Hong Kong (August 1991 - \$130).

For the illustration of a very similar dish refer to Sotheby's (London) *Catalogue of the Edward T. Chow Collection: Part Two - Early Chinese Ceramics and Ancient Bronzes*, December 16, 1980, lot 281.



**S-042**

White ware censer with an evenly applied vitreous glaze, containing a fine network of crackle overall, extending unevenly to the interior with unglazed bottom exposing the fine, compact sugary-textured white body. Delicately potted with a compressed globular body, the short neck surmounted by a flared rim. Concentric striations from the potter's wheel are clearly visible on the unglazed interior. Three short, stubby feet with some kiln grit adhering surround the domed glazed base and support the censer.

D: 3 1/2 in. (9.0 cm.), H: 2 1/4 in. (5.3 cm.).

Song: 960 to 1279.

Provenance: Palawan excavations, Philippines - acquired in Manila (May 1993 - \$94).



**S-043**

Small *kuan* shaped white ware jarlet with gently rounded shoulders tapering to a short upright neck. The lightly applied vitreous glaze pooling to a light-green tone at the juncture of the shoulders and neck, and ending unevenly at the base. The delicately potted jarlet's interior lightly glazed, and the narrow carved base nipped and surrounded by an irregularly proportioned footrim.

H: 2 1/4 in. (5.7 cm.).

Song: 960 to 1279.

Provenance: Palawan excavations, Philippines - acquired in Manila (May 1993 - \$75).



**S-044**

Celadon bowl with steeply rounded conical sides carved and incised on the interior with leaf and floral scrolls filled in with dotted combing; incised lines in 17 bunches of eight lines each radiating from the base on the exterior. The thin light green glaze extends to the square cut vertical footrim, with the narrow flat unglazed base burnt russet and revealing the grey body where roughly finished.

D: 6 in. (15.1 cm.).

Song (960 to 1279): 12th to 13th centuries.

Provenance: Surigao del Sur excavations, Philippines - acquired in Manila (National Museum of the Philippines artefact registration sticker affixed) - (May 1993 - \$150).

For illustrations of similar bowls refer to: The Oriental Ceramic Society of the Philippines, *Chinese and Southeast Asian Greenware Found in the Philippines*, No. 4.5; Lu Yaw, *Song Ceramics*, No. 58; and Southeast Asian Ceramics Society, *Chinese Celadons and Other Related Wares in Southeast Asia*, Plate 44.

Compare also with S-049, a contemporaneous example with similar decorative treatment, from the Tanjung Simpang shipwreck in Malaysia.

**(REVISED 26 October 2007)**

**S-045**

Brown glazed covered box of compressed circular form with flattened cover and nearly vertical sides curving in sharply to the base. A lustrous dark brown glaze covers the box, including a light application to the interior, ending unevenly above the markedly concave unglazed base with fine-grained light beige biscuit containing an incised circular-shaped depression in the center.

D: 2 7/16 in. (6.2 cm.);

H: 1 1/4 in. (3.2 cm.).

Southern Song (1128 to 1279): 13th century.

Provenance: Maros, South Sulawesi excavations, Indonesia -  
acquired in Makassar, South Sulawesi (May 1996 - \$50).

**NOTE:** Although originally catalogued as Song, more recent research, including shipwreck findings, would indicate a more probable 14th century Yuan dating.



**S-046**

**Brown glazed jarlet with upright neck with lipped rim and globular body accented with horizontal potter's wheel striations. The exterior covered with a mottled dark caramel-brown glaze, in contrast to the smooth unglazed interior. The light-beige fine grained biscuit exposed where the glaze terminates above the foot. The beveled footring chamfered on the interior, and the unglazed narrow base containing a triangular-shaped depression in the center.**

**H: 2 9/16 in. (6.5 cm.).**

**Southern Song (1128 to 1279): 13th century.**

**Provenance: South Sulawesi excavations, Indonesia - acquired in Makassar, South Sulawesi (May 1996 - \$26).**



**S-047**

**Celadon bowl with shallow, gently flaring sides covered with a light bluish-green glaze. The interior and the underside are plain.**

**Carefully glazed narrow nipped base; the footrim inward sloping on both the exterior and the interior, with the unglazed edge revealing the gray body.**

**D: 6 1/2 in. (16.5 cm.).**

**Song: 960 to 1279.**

**Provenance: acquired in Saigon (April 1999 - \$100).**



**S-048**

Dehua bowl is delicately potted with gently rounded sides and unglazed upright rim. Exterior is molded with two rows of upright lotus petals extending from just below the mouthrim to the foot; interior is undecorated. The attractive bluish white finely crackled glaze ends unevenly above the foot, which is inward sloping on the exterior and extremely shallow on the interior. Unglazed flat base is very shallow with chalky cream-white body.

**D: 5 13/16 in. (14.7 cm.).**

**Song: 960 to 1279 - Dehua kilns.**

**Provenance: Arturo De Santos Collection; Santa Cruz, Laguna excavations, Philippines; Vincent Magbuhos Antiques, Manila - acquired in Manila (February 2001 - \$63).**

A very similar bowl is illustrated in the Oriental Ceramic Society of the Philippines, *Chinese and South-East Asia White Ware Found in the Philippines*, Plate 119.

